

## Anti-TSEN15 antibody

<b>Cat. No.</b>	ml224338
<b>Package</b>	25 µl/100 µl/200 µl
<b>Storage</b>	-20°C, pH7.4 PBS, 0.05% NaN <sub>3</sub> , 40% Glycerol

### Product overview

<b>Description</b>	Anti-TSEN15 rabbit polyclonal antibody
<b>Applications</b>	ELISA, WB, IHC
<b>Immunogen</b>	Full length fusion protein
<b>Reactivity</b>	Human, Mouse
<b>Content</b>	1.6 mg/ml
<b>Host species</b>	Rabbit
<b>Ig class</b>	Immunogen-specific rabbit IgG
<b>Purification</b>	Antigen affinity purification

### Target information

<b>Symbol</b>	TSEN15
<b>Full name</b>	tRNA splicing endonuclease subunit 15

**Synonyms** sen15; C1orf19

**Swissprot** Q8WW01

#### **Target Background**

This gene encodes a subunit of the tRNA splicing endonuclease, which catalyzes the removal of introns from tRNA precursors. Alternative splicing results in multiple transcript variants. There is a pseudogene of this gene on chromosome 17.

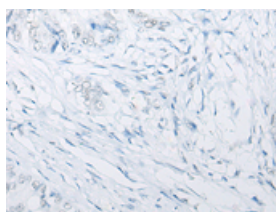
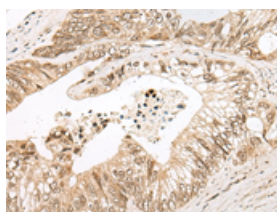
## Applications

### Immunohistochemistry

Predicted cell location: Nucleus and Cytoplasm

Positive control: Human colorectal cancer

Recommended dilution: 50-300

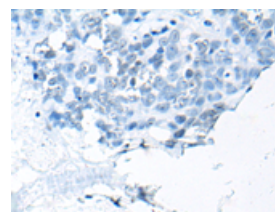
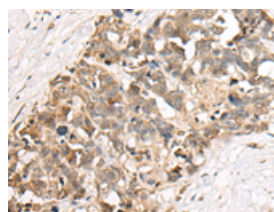


The image on the left is immunohistochemistry of paraffin-embedded Human colorectal cancer tissue using ml224338(TSEN15 Antibody) at dilution 1/85, on the right is treated with fusion protein. (Original magnification:  $\times 200$ )

Predicted cell location: Nucleus and Cytoplasm

Positive control: Human thyroid cancer

Recommended dilution: 50-300



The image on the left is immunohistochemistry of paraffin-embedded Human thyroid cancer tissue using ml224338(TSEN15 Antibody) at dilution 1/85, on the right is treated with fusion protein. (Original magnification:  $\times 200$ )

### Western blotting

Predicted band size: 19 kDa

Positive control: Mouse spleen tissue lysate

Recommended dilution: 200-1000

Gel: 12%SDS-PAGE

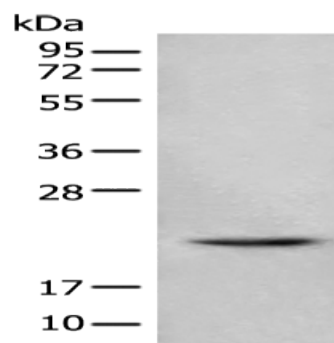
Lysate: 40  $\mu$ g

Lane: Mouse spleen tissue lysate

Primary antibody: ml224338(TSEN15 Antibody) at dilution 1/800

Secondary antibody: Goat anti rabbit IgG at 1/8000 dilution

Exposure time: 30 seconds



## ELISA

Recommended dilution: 5000-10000

联系电话: 4008-898-798, 021-61725725

联系QQ: 2881505695, 2881505696

邮箱: [mlbio\\_cn@yeah.net](mailto:mlbio_cn@yeah.net)

网址: [www.mlbio.cn](http://www.mlbio.cn)