

Anti-C21orf33 antibody

Cat. No.	ml224353
Package	25 µl/100 µl/200 µl
Storage	-20°C, pH7.4 PBS, 0.05% NaN ₃ , 40% Glycerol

Product overview

Description	Anti-C21orf33 rabbit polyclonal antibody
Applications	ELISA, WB, IHC
Immunogen	Fusion protein of human C21orf33
Reactivity	Human, Mouse, Rat
Content	1 mg/ml
Host species	Rabbit
Ig class	Immunogen-specific rabbit IgG
Purification	Antigen affinity purification

Target information

Symbol	C21orf33
Full name	chromosome 21 open reading frame 33

Synonyms ES1; HES1; KNPH; KNPI; GT335

Swissprot P30042

Target Background

This gene encodes a potential mitochondrial protein that is a member of the DJ-1/Pfpl gene family. This protein is overexpressed in fetal Down syndrome brain. Alternate splicing results in multiple transcript variants.

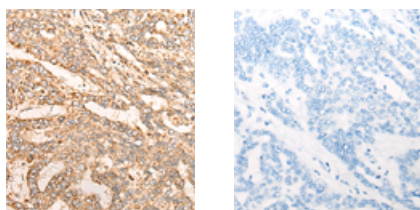
Applications

Immunohistochemistry

Predicted cell location: Cytoplasm

Positive control: Human liver cancer

Recommended dilution: 30-150



The image on the left is immunohistochemistry of paraffin-embedded Human liver cancer tissue using ml224353(C21orf33 Antibody) at dilution 1/35, on the right is treated with fusion protein. (Original magnification: ×200)

Western blotting

Predicted band size: 28 kDa

Positive control: Rat heart tissue and Mouse skeletal muscle tissue, 293T, A549, Hela, K562 and HEPG2 cell lysates

Recommended dilution: 500-2000

Gel: 12%SDS-PAGE

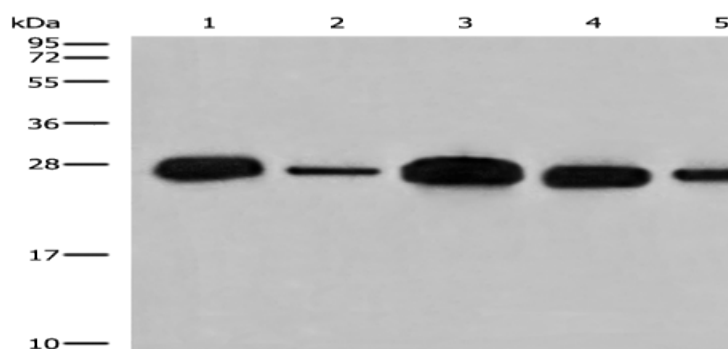
Lysate: 40 µg

Lane 1-7: Rat heart tissue and Mouse skeletal muscle tissue, 293T, A549, Hela, K562 and HEPG2 cell lysates

Primary antibody: ml224353(C21orf33 Antibody) at dilution 1/400

Secondary antibody: Goat anti rabbit IgG at 1/8000 dilution

Exposure time: 1 second



ELISA

Recommended dilution: 5000-10000

联系电话: 4008-898-798, 021-61725725

联系QQ: 2881505695, 2881505696

邮箱: mlbio_cn@yeah.net

网址: www.mlbio.cn