

Anti-DEPDC1 antibody

Cat. No.	ml222229
Package	25 µl/100 µl/200 µl
Storage	-20°C, pH7.4 PBS, 0.05% NaN ₃ , 40% Glycerol

Product overview

Description	Anti-DEPDC1 rabbit polyclonal antibody
Applications	ELISA, WB
Immunogen	Fusion protein of human DEPDC1
Reactivity	Human
Content	0.5 mg/ml
Host species	Rabbit
Ig class	Immunogen-specific rabbit IgG
Purification	Antigen affinity purification

Target information

Symbol	DEPDC1
Full name	DEP domain containing 1
Synonyms	DEP.8; SDP35; DEPDC1A; DEPDC1-V2
Swissprot	Q5TB30

Target Background

DEP domain containing 1 is a protein in humans that is encoded by the DEPDC1 gene. May be involved in transcriptional regulation as a transcriptional corepressor. The DEPDC1A-ZNF224 complex may play a critical role in bladder carcinogenesis by repressing the transcription of the A20 gene, leading to transport of NF-KB protein into the nucleus, resulting in suppression of apoptosis of bladder cancer cells.

订购热线: 4008-898-798

Applications

Western blotting

Predicted band size: 93 kDa

Positive control: A172, hela, hepg2 and 293T cells

Recommended dilution: 200-1000

Gel: 6%SDS-PAGE

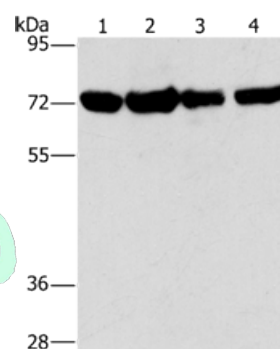
Lysate: 40 µg

Lane 1-4: A172 cells, hela cells, hepg2 cells, 293T cells

Primary antibody: ml222229(DEPDC1 Antibody) at dilution 1/150

Secondary antibody: Goat anti rabbit IgG at 1/8000 dilution

Exposure time: 1 minute



ELISA

Recommended dilution: 1000-2000

联系电话: 4008-898-798, 021-61725725

联系QQ: 2881505695, 2881505696

邮箱: mlbio_cn@yeah.net

网址: www.mlbio.cn