

Anti-DPF2 antibody

| | |
|-----------------|---|
| Cat. No. | ml222249 |
| Package | 25 µl/100 µl/200 µl |
| Storage | -20°C, pH7.4 PBS, 0.05% NaN ₃ , 40% Glycerol |

Product overview

| | |
|---------------------|--------------------------------------|
| Description | Anti-DPF2 rabbit polyclonal antibody |
| Applications | ELISA, WB |
| Immunogen | Fusion protein of human DPF2 |
| Reactivity | Human, Mouse |
| Content | 0.3 mg/ml |
| Host species | Rabbit |
| Ig class | Immunogen-specific rabbit IgG |
| Purification | Antigen affinity purification |

Target information

| | |
|------------------|--|
| Symbol | DPF2 |
| Full name | D4, zinc and double PHD fingers family 2 |
| Synonyms | REQ; UBID4; ubi-d4 |
| Swissprot | Q92785 |

Target Background

The protein encoded by this gene is a member of the d4 domain family, characterized by a zinc finger-like structural motif. This protein functions as a transcription factor which is necessary for the apoptotic response following deprivation of survival factors. It likely serves a regulatory role in rapid hematopoietic cell growth and turnover. This gene is considered a candidate gene for multiple endocrine neoplasia type I, an inherited cancer syndrome involving multiple parathyroid, enteropancreatic, and pituitary tumors.

订购热线: 4008-898-798

Applications

Western blotting

Predicted band size: 44 kDa

Positive control: K562 and Jurkat cells

Recommended dilution: 200-1000

Gel: 8%SDS-PAGE

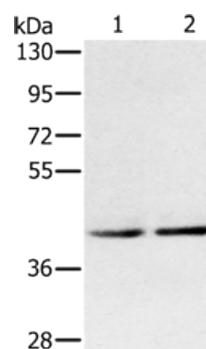
Lysate: 40 µg

Lane 1-2: K562 cells, Jurkat cells

Primary antibody: ml222249(DPF2 Antibody) at dilution 1/400

Secondary antibody: Goat anti rabbit IgG at 1/8000 dilution

Exposure time: 1 minute



ELISA

Recommended dilution: 1000-2000

联系电话: 4008-898-798, 021-61725725

联系QQ: 2881505695, 2881505696

邮箱: mlbio_cn@yeah.net

网址: www.mlbio.cn