

Anti-C7 antibody

Cat. No.	ml224366
Package	25 µl/100 µl/200 µl
Storage	-20°C, pH7.4 PBS, 0.05% NaN ₃ , 40% Glycerol

Product overview

Description	Anti-C7 rabbit polyclonal antibody
Applications	ELISA, WB
Immunogen	Fusion protein of human C7
Reactivity	Human, Mouse
Content	0.6 mg/ml
Host species	Rabbit
Ig class	Immunogen-specific rabbit IgG
Purification	Antigen affinity purification

Target information

Symbol	C7
Full name	complement component 7
Synonyms	
Swissprot	P10643

Target Background

The complement cascade is a multi-protein system that functions to clear pathogens from an infected host. Part of the innate (unchanging) immune system, the complement cascade consists of proteins and inactive zymogens that are present in blood and are stimulated by one of several triggers. Once stimulated, the cascade relays amplified responses throughout the body, ultimately activating the cell-killing membrane attack complex which can insert itself into the cell membrane and cause the cell to lyse. C7 (complement component 7) is an 843 amino acid secreted protein that participates in the formation of membrane attack complex (MAC), a complex that forms pores in the plasma membrane of target cells for innate and adaptive immune responses. As a membrane anchor, C7 exists as a monomer or dimer and can form multimeric rosettes with C5β. C7 defects are the cause of component C7 deficiency (C7D), characterized by recurrent bacterial infections caused by *Neisseria meningitidis*.

订购热线: 4008-898-798

Applications

Western blotting

Predicted band size: 94 kDa

Positive control: Mouse lung tissue lysate

Recommended dilution: 500-2000

Gel: 8%SDS-PAGE

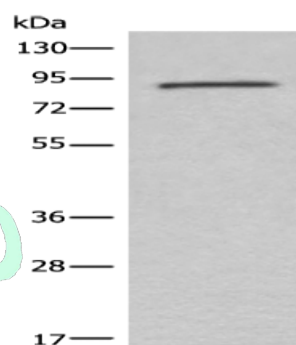
Lysate: 40 µg

Lane: Mouse lung tissue lysate

Primary antibody: ml224366(C7 Antibody) at dilution 1/800

Secondary antibody: Goat anti rabbit IgG at 1/8000 dilution

Exposure time: 10 minutes



ELISA

Recommended dilution: 5000-10000

联系电话: 4008-898-798, 021-61725725

联系QQ: 2881505695, 2881505696

邮箱: mlbio_cn@yeah.net

网址: www.mlbio.cn