

## Anti-DRG1 antibody

<b>Cat. No.</b>	ml222256
<b>Package</b>	25 µl/100 µl/200 µl
<b>Storage</b>	-20°C, pH7.4 PBS, 0.05% NaN <sub>3</sub> , 40% Glycerol

### Product overview

<b>Description</b>	Anti-DRG1 rabbit polyclonal antibody
<b>Applications</b>	ELISA, WB, IHC
<b>Immunogen</b>	Fusion protein of human DRG1
<b>Reactivity</b>	Human, Mouse
<b>Content</b>	0.6 mg/ml
<b>Host species</b>	Rabbit
<b>Ig class</b>	Immunogen-specific rabbit IgG
<b>Purification</b>	Antigen affinity purification

### Target information

<b>Symbol</b>	DRG1
<b>Full name</b>	developmentally regulated GTP binding protein 1

**Synonyms** NEDD3

**Swissprot** Q9Y295

### Target Background

DRG1 (developmentally regulated GTP binding protein 1), also known as NEDD3 (neural precursor cell expressed developmentally down-regulated protein 3), is a 367 amino acid protein that localizes to the cytoplasm and belongs to the GTP1/OBG family. Expressed at high levels in heart, kidney and skeletal muscle and at lower levels in brain, liver, placenta, lung, colon and spleen, DRG1 binds to TAL1 and TAL2 and is thought to play a role in cell proliferation and differentiation, as well as in apoptosis, suggesting a role in tumor formation and metastasis. DRG1 is subject to polyubiquitination and sumoylation, the former of which induces proteolytic degradation. The gene encoding DRG1 maps to human chromosome 22, which houses over 500 genes and is the second smallest human chromosome. Mutations in several of the genes that map to chromosome 22 are involved in the development of Phelan-McDermid syndrome, Neurofibromatosis type 2, autism and schizophrenia.

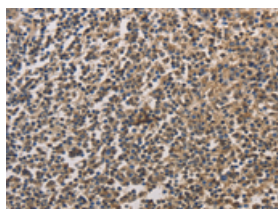
## Applications

### Immunohistochemistry

Predicted cell location: Cytoplasm

Positive control: Human tonsil

Recommended dilution: 50-200

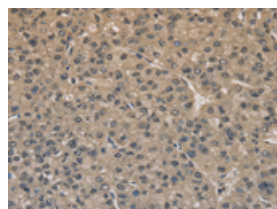


The image on the left is immunohistochemistry of paraffin-embedded Human tonsil tissue using ml222256(DRG1 Antibody) at dilution 1/20, on the right is treated with fusion protein. (Original magnification:  $\times 200$ )

Predicted cell location: Cytoplasm

Positive control: Human liver cancer

Recommended dilution: 50-200



The image on the left is immunohistochemistry of paraffin-embedded Human liver cancer tissue using ml222256(DRG1 Antibody) at dilution 1/20, on the right is treated with fusion protein. (Original magnification:  $\times 200$ )

### Western blotting

Predicted band size: 41 kDa

Positive control: Human fetal brain tissue

Recommended dilution: 500-2000

Gel: 6%SDS-PAGE

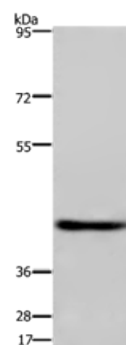
Lysate: 40  $\mu$ g

Lane: Human fetal brain tissue

Primary antibody: ml222256(DRG1 Antibody) at dilution 1/500

Secondary antibody: Goat anti rabbit IgG at 1/8000 dilution

Exposure time: 40 seconds



## ELISA

Recommended dilution: 2000-5000

联系电话: 4008-898-798, 021-61725725

联系QQ: 2881505695, 2881505696

邮箱: [mlbio\\_cn@yeah.net](mailto:mlbio_cn@yeah.net)

网址: [www.mlbio.cn](http://www.mlbio.cn)