

Anti-EIF3H antibody

Cat. No.	ml222280
Package	25 µl/100 µl/200 µl
Storage	-20°C, pH7.4 PBS, 0.05% NaN ₃ , 40% Glycerol

Product overview

Description	Anti-EIF3H rabbit polyclonal antibody
Applications	ELISA, WB, IHC
Immunogen	Fusion protein of human EIF3H
Reactivity	Human, Mouse, Rat
Content	0.8 mg/ml
Host species	Rabbit
Ig class	Immunogen-specific rabbit IgG
Purification	Antigen affinity purification

Target information

Symbol	EIF3H
Full name	eukaryotic translation initiation factor 3, subunit H

Synonyms EIF3S3; eIF3-p40; eIF3-gamma

Swissprot O15372

Target Background

Component of the eukaryotic translation initiation factor 3 (eIF-3) complex, which is required for several steps in the initiation of protein synthesis. The eIF-3 complex associates with the 40S ribosome and facilitates the recruitment of eIF-1, eIF-1A, eIF-2:GTP:methionyl-tRNA_i and eIF-5 to form the 43S preinitiation complex (43S PIC). The eIF-3 complex stimulates mRNA recruitment to the 43S PIC and scanning of the mRNA for AUG recognition. The eIF-3 complex is also required for disassembly and recycling of posttermination ribosomal complexes and subsequently prevents premature joining of the 40S and 60S ribosomal subunits prior to initiation.

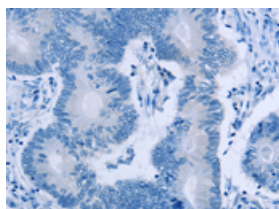
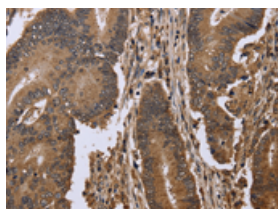
Applications

Immunohistochemistry

Predicted cell location: Nucleus and Cytoplasm

Positive control: Human colon cancer

Recommended dilution: 100-300

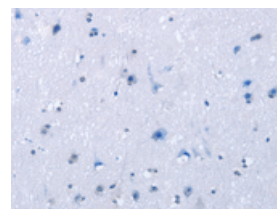
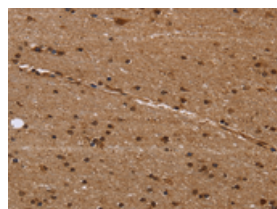


The image on the left is immunohistochemistry of paraffin-embedded Human colon cancer tissue using ml222280(EIF3H Antibody) at dilution 1/50, on the right is treated with fusion protein. (Original magnification: ×200)

Predicted cell location: Nucleus and Cytoplasm

Positive control: Human brain

Recommended dilution: 100-300



The image on the left is immunohistochemistry of paraffin-embedded Human brain tissue using ml222280(EIF3H Antibody) at dilution 1/50, on the right is treated with fusion protein. (Original magnification: ×200)

Western blotting

Predicted band size: 40 kDa

Positive control: Human adrenal pheochromocytoma and fetal brain tissue

Recommended dilution: 500-2000

Gel: 8%SDS-PAGE

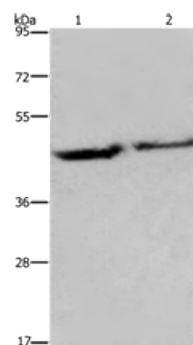
Lysate: 40 μ g

Lane 1-2: Human adrenal pheochromocytoma tissue, Human fetal brain tissue

Primary antibody: ml222280(EIF3H Antibody) at dilution 1/1150

Secondary antibody: Goat anti rabbit IgG at 1/8000 dilution

Exposure time: 40 seconds



ELISA

Recommended dilution: 2000-5000

联系电话: 4008-898-798, 021-61725725

联系QQ: 2881505695, 2881505696

邮箱: mlbio_cn@yeah.net

网址: www.mlbio.cn