

Anti-MCM5 antibody

Cat. No.	ml220960
Package	25 µl/100 µl/200 µl
Storage	-20°C, pH7.4 PBS, 0.05% NaN ₃ , 40% Glycerol

Product overview

Description	Anti-MCM5 rabbit polyclonal antibody
Applications	ELISA, WB, IHC
Immunogen	Fusion protein of human MCM5
Reactivity	Human, Mouse
Content	0.4 mg/ml
Host species	Rabbit
Ig class	Immunogen-specific rabbit IgG
Purification	Antigen affinity purification

Target information

Symbol	MCM5
Full name	minichromosome maintenance complex component 5

Synonyms CDC46; P1-CDC46

Swissprot P33992

Target Background

The protein encoded by this gene is structurally very similar to the CDC46 protein from *S. cerevisiae*, a protein involved in the initiation of DNA replication. The encoded protein is a member of the MCM family of chromatin-binding proteins and can interact with at least two other members of this family. The encoded protein is upregulated in the transition from the G0 to G1/S phase of the cell cycle and may actively participate in cell cycle regulation.

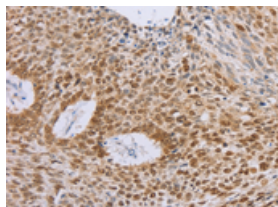
Applications

Immunohistochemistry

Predicted cell location: Nucleus

Positive control: Human lung cancer

Recommended dilution: 50-200

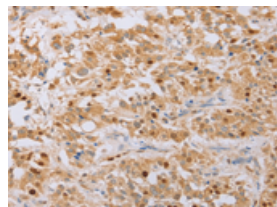


The image on the left is immunohistochemistry of paraffin-embedded Human lung cancer tissue using ml220960(MCM5 Antibody) at dilution 1/40, on the right is treated with fusion protein. (Original magnification: ×200)

Predicted cell location: Nucleus

Positive control: Human thyroid cancer

Recommended dilution: 50-200



The image on the left is immunohistochemistry of paraffin-embedded Human thyroid cancer tissue using ml220960(MCM5 Antibody) at dilution 1/40, on the right is treated with fusion protein. (Original magnification: ×200)

Western blotting

Predicted band size: 82 kDa

Positive control: HepG2, K562, Jurkat, 231 and hela cells

Recommended dilution: 200-1000

Gel: 6%SDS-PAGE

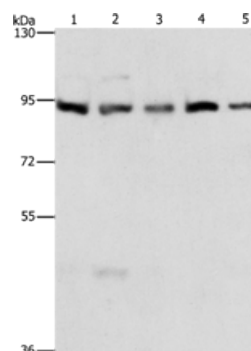
Lysate: 40 μ g

Lane 1-5: HepG2 cells, K562 cells, Jurkat cells, 231 cells, hela cells

Primary antibody: ml220960(MCM5 Antibody) at dilution 1/300

Secondary antibody: Goat anti rabbit IgG at 1/8000 dilution

Exposure time: 20 seconds



ELISA

Recommended dilution: 1000-2000

联系电话: 4008-898-798, 021-61725725

联系QQ: 2881505695, 2881505696

邮箱: mlbio_cn@yeah.net

网址: www.mlbio.cn