

Anti-CDC7 antibody

Cat. No.	ml224491
Package	25 µl/100 µl/200 µl
Storage	-20°C, pH7.4 PBS, 0.05% NaN ₃ , 40% Glycerol

Product overview

Description	Anti-CDC7 rabbit polyclonal antibody
Applications	ELISA, WB
Immunogen	Fusion protein of human CDC7
Reactivity	Human
Content	0.5 mg/ml
Host species	Rabbit
Ig class	Immunogen-specific rabbit IgG
Purification	Antigen affinity purification

Target information

Symbol	CDC7
Full name	cell division cycle 7
Synonyms	Hsk1; CDC7L1; HsCDC7; huCDC7
Swissprot	O00311

Target Background

This gene encodes a cell division cycle protein with kinase activity that is critical for the G1/S transition. The yeast homolog is also essential for initiation of DNA replication as cell division occurs. Overexpression of this gene product may be associated with neoplastic transformation for some tumors. Multiple alternatively spliced transcript variants that encode the same protein have been detected.

订购热线: 4008-898-798

Applications

Western blotting

Predicted band size: 64 kDa

Positive control: 231, 293T, PC-3, Hela cell lysates

Recommended dilution: 500-2000

Gel: 8%SDS-PAGE

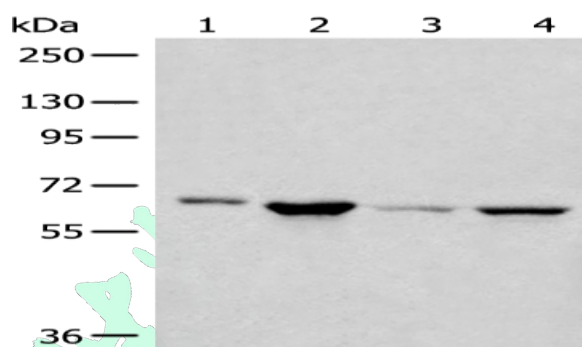
Lysate: 40 µg

Lane 1-4: 231, 293T, PC-3, Hela cell lysates

Primary antibody: ml224491(CDC7 Antibody) at dilution 1/450

Secondary antibody: Goat anti rabbit IgG at 1/8000 dilution

Exposure time: 15 seconds



ELISA

Recommended dilution: 5000-10000

联系电话: 4008-898-798, 021-61725725

联系QQ: 2881505695, 2881505696

邮箱: mlbio_cn@yeah.net

网址: www.mlbio.cn