

Anti-MCM7 antibody

Cat. No.	ml220965
Package	25 µl/100 µl/200 µl
Storage	-20°C, pH7.4 PBS, 0.05% NaN ₃ , 40% Glycerol

Product overview

Description	Anti-MCM7 rabbit polyclonal antibody
Applications	ELISA, WB, IHC
Immunogen	Fusion protein of human MCM7
Reactivity	Human, Mouse
Content	0.2 mg/ml
Host species	Rabbit
Ig class	Immunogen-specific rabbit IgG
Purification	Antigen affinity purification

Target information

Symbol	MCM7
Full name	minichromosome maintenance complex component 7

Synonyms MCM2, CDC47, P85MCM, P1CDC47, PNAS146, P1.1-MCM3

Swissprot P33993

Target Background

The protein encoded by this gene is one of the highly conserved mini-chromosome maintenance proteins (MCM) that are essential for the initiation of eukaryotic genome replication. The hexameric protein complex formed by the MCM proteins is a key component of the pre-replication complex (pre_RC) and may be involved in the formation of replication forks and in the recruitment of other DNA replication related proteins. The MCM complex consisting of this protein and MCM2, 4 and 6 proteins possesses DNA helicase activity, and may act as a DNA unwinding enzyme. Cyclin D1-dependent kinase, CDK4, is found to associate with this protein, and may regulate the binding of this protein with the tumorsuppressor protein RB1/RB. Alternatively spliced transcript variants encoding distinct isoforms have been reported.

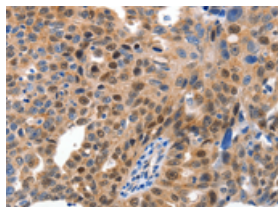
Applications

Immunohistochemistry

Predicted cell location: Cytoplasm, Nucleus

Positive control: Human ovarian cancer

Recommended dilution: 15-50

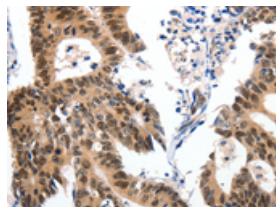


The image on the left is immunohistochemistry of paraffin-embedded Human ovarian cancer tissue using ml220965(MCM7 Antibody) at dilution 1/15, on the right is treated with fusion protein. (Original magnification: ×200)

Predicted cell location: Cytoplasm, Nucleus

Positive control: Human colon cancer

Recommended dilution: 15-50



The image on the left is immunohistochemistry of paraffin-embedded Human colon cancer tissue using ml220965(MCM7 Antibody) at dilution 1/15, on the right is treated with fusion protein. (Original magnification: ×200)

Western blotting

Predicted band size: 81 kDa

Positive control: Jurkat cells

Recommended dilution: 500-2000

Gel: 10%SDS-PAGE

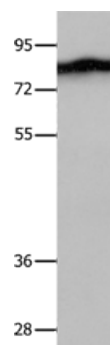
Lysate: 50 µg

Lane: Jurkat cells

Primary antibody: ml220965(MCM7 Antibody) at dilution 1/300

Secondary antibody: Goat anti rabbit IgG at 1/8000 dilution

Exposure time: 30 seconds



ELISA

Recommended dilution: 1000-5000

联系电话: 4008-898-798, 021-61725725

联系QQ: 2881505695, 2881505696

邮箱: mlbio_cn@yeah.net

网址: www.mlbio.cn