

Anti-EPSTI1 antibody

Cat. No.	ml222309
Package	25 µl/100 µl/200 µl
Storage	-20°C, pH7.4 PBS, 0.05% NaN ₃ , 40% Glycerol

Product overview

Description	Anti-EPSTI1 rabbit polyclonal antibody
Applications	ELISA, WB, IHC
Immunogen	Fusion protein of human EPSTI1
Reactivity	Human
Content	0.7 mg/ml
Host species	Rabbit
Ig class	Immunogen-specific rabbit IgG
Purification	Antigen affinity purification

Target information

Symbol	EPSTI1
Full name	epithelial stromal interaction 1

Synonyms BRESI1

Swissprot Q96J88

Target Background

EPSTI1 (Epithelial-stromal interaction protein 1), also known as BRESI1, is a 318 amino acid protein that is highly expressed in spleen, placenta, small intestine, liver, kidney, thymus, testis and salivary gland. Existing as three isoforms that are formed due to alternative splicing events, EPSTI1 is weakly expressed in normal breast tissue, but is heavily up-regulated in breast carcinoma, suggesting an important role for EPSTI1 in tumor formation and/or progression. Additionally, EPSTI1 is found in blood cells from systemic lupus erythematosus (SLE)-afflicted patients, implicating EPSTI1 as a potential protein involved in SLE.

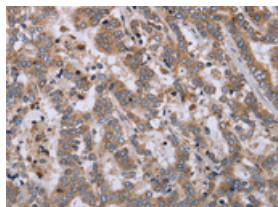
Applications

Immunohistochemistry

Predicted cell location: Cytoplasm or Nucleus

Positive control: Human liver cancer

Recommended dilution: 50-200

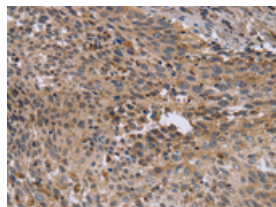


The image on the left is immunohistochemistry of paraffin-embedded Human liver cancer tissue using ml222309(EPST11 Antibody) at dilution 1/40, on the right is treated with fusion protein. (Original magnification: $\times 200$)

Predicted cell location: Cytoplasm or Nucleus

Positive control: Human cervical cancer

Recommended dilution: 50-200



The image on the left is immunohistochemistry of paraffin-embedded Human cervical cancer tissue using ml222309(EPST11 Antibody) at dilution 1/40, on the right is treated with fusion protein. (Original magnification: $\times 200$)

Western blotting

Predicted band size: 37 kDa

Positive control: Human placenta tissue

Recommended dilution: 1000-5000

Gel: 8%SDS-PAGE

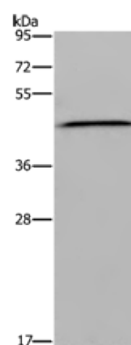
Lysate: 40 μ g

Lane: Human placenta tissue

Primary antibody: ml222309(EPST11 Antibody) at dilution 1/1900

Secondary antibody: Goat anti rabbit IgG at 1/8000 dilution

Exposure time: 30 seconds



ELISA

Recommended dilution: 2000-10000

联系电话: 4008-898-798, 021-61725725

联系QQ: 2881505695, 2881505696

邮箱: mlbio_cn@yeah.net

网址: www.mlbio.cn