

## Anti-CHST11 antibody

<b>Cat. No.</b>	ml224558
<b>Package</b>	25 µl/100 µl/200 µl
<b>Storage</b>	-20°C, pH7.4 PBS, 0.05% NaN <sub>3</sub> , 40% Glycerol

### Product overview

<b>Description</b>	Anti-CHST11 rabbit polyclonal antibody
<b>Applications</b>	ELISA, WB, IHC
<b>Immunogen</b>	Fusion protein of human CHST11
<b>Reactivity</b>	Human, Mouse, Rat
<b>Content</b>	0.9 mg/ml
<b>Host species</b>	Rabbit
<b>Ig class</b>	Immunogen-specific rabbit IgG
<b>Purification</b>	Antigen affinity purification

### Target information

<b>Symbol</b>	CHST11
<b>Full name</b>	carbohydrate sulfotransferase 11

**Synonyms** C4ST; C4ST1; C4ST-1; HSA269537

**Swissprot** Q9NPF2

#### Target Background

The protein encoded by this gene belongs to the sulfotransferase 2 family. It is localized to the golgi membrane, and catalyzes the transfer of sulfate to position 4 of the N-acetylgalactosamine (GalNAc) residue of chondroitin. Chondroitin sulfate constitutes the predominant proteoglycan present in cartilage, and is distributed on the surfaces of many cells and extracellular matrices. A chromosomal translocation involving this gene and IgH, t(12;14)(q23;q32), has been reported in a patient with B-cell chronic lymphocytic leukemia. Alternatively spliced transcript variants encoding different isoforms have been found for this gene.

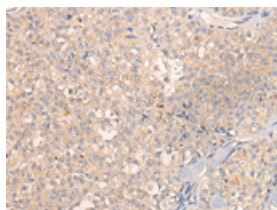
## Applications

### Immunohistochemistry

Predicted cell location: Cytoplasm or Nucleus

Positive control: Human ovarian cancer

Recommended dilution: 25-100

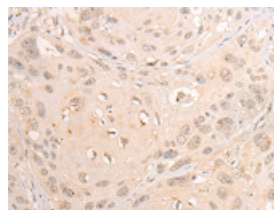


The image on the left is immunohistochemistry of paraffin-embedded Human ovarian cancer tissue using ml224558(CHST11 Antibody) at dilution 1/25, on the right is treated with fusion protein. (Original magnification: ×200)

Predicted cell location: Cytoplasm or Nucleus

Positive control: Human esophagus cancer

Recommended dilution: 25-100



The image on the left is immunohistochemistry of paraffin-embedded Human esophagus cancer tissue using ml224558(CHST11 Antibody) at dilution 1/25, on the right is treated with fusion protein. (Original magnification: ×200)

### Western blotting

Predicted band size: 42 kDa

Positive control: K562 cell lysate

Recommended dilution: 200-1000

Gel: 8%SDS-PAGE

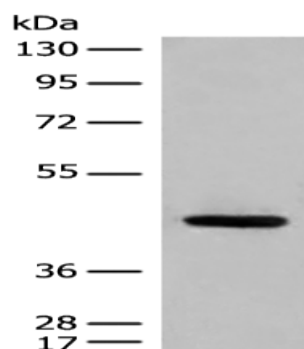
Lysate: 40  $\mu$ g

Lane: K562 cell lysate

Primary antibody: ml224558(CHST11 Antibody) at dilution 1/300

Secondary antibody: Goat anti rabbit IgG at 1/8000 dilution

Exposure time: 2 minutes



#### ELISA

Recommended dilution: 5000-10000

联系电话: 4008-898-798, 021-61725725

联系QQ: 2881505695, 2881505696

邮箱: [mlbio\\_cn@yeah.net](mailto:mlbio_cn@yeah.net)

网址: [www.mlbio.cn](http://www.mlbio.cn)