

Anti-MYL6 antibody

Cat. No.	ml221016
Package	25 µl/100 µl/200 µl
Storage	-20°C, pH7.4 PBS, 0.05% NaN ₃ , 40% Glycerol

Product overview

Description	Anti-MYL6 rabbit polyclonal antibody
Applications	ELISA, WB, IHC
Immunogen	Fusion protein of human MYL6
Reactivity	Human, Mouse, Rat
Content	0.2 mg/ml
Host species	Rabbit
Ig class	Immunogen-specific rabbit IgG
Purification	Antigen affinity purification

Target information

Symbol	MYL6
Full name	myosin, light chain 6, alkali, smooth muscle and non-muscle

Synonyms	LC17; ESMLC; LC17A; LC17B; MLC-3; MLC1SM; MLC3NM; MLC3SM; LC17-GI; LC17-NM
Swissprot	P60660

Target Background

Myosin is a hexameric ATPase cellular motor protein. It is composed of two heavy chains, two nonphosphorylatable alkali light chains, and two phosphorylatable regulatory light chains. This gene encodes a myosin alkali light chain that is expressed in smooth muscle and non-muscle tissues. Genomic sequences representing several pseudogenes have been described and two transcript variants encoding different isoforms have been identified for this gene.

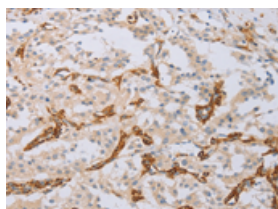
Applications

Immunohistochemistry

Predicted cell location: Cytoplasm

Positive control: Human thyroid cancer

Recommended dilution: 50-200

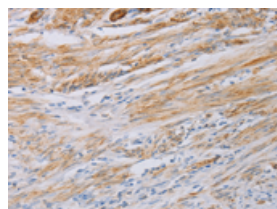


The image on the left is immunohistochemistry of paraffin-embedded Human thyroid cancer tissue using ml221016(MYL6 Antibody) at dilution 1/40, on the right is treated with fusion protein. (Original magnification: ×200)

Predicted cell location: Cytoplasm

Positive control: Human cervical cancer

Recommended dilution: 50-200



The image on the left is immunohistochemistry of paraffin-embedded Human cervical cancer tissue using ml221016(MYL6 Antibody) at dilution 1/40, on the right is treated with fusion protein. (Original magnification: ×200)

Western blotting

Predicted band size: 17 kDa

Positive control: Mouse stomach tissue

Recommended dilution: 200-1000

Gel: 10%SDS-PAGE

Lysate: 40 μ g

Lane: Mouse stomach tissue

Primary antibody: ml221016(MYL6 Antibody) at dilution 1/237.5

Secondary antibody: Goat anti rabbit IgG at 1/8000 dilution

Exposure time: 20 seconds



ELISA

Recommended dilution: 1000-2000

联系电话: 4008-898-798, 021-61725725

联系QQ: 2881505695, 2881505696

邮箱: mlbio_cn@yeah.net

网址: www.mlbio.cn