

Anti-FAIM2 antibody

Cat. No.	ml222335
Package	25 µl/100 µl/200 µl
Storage	-20°C, pH7.4 PBS, 0.05% NaN ₃ , 40% Glycerol

Product overview

Description	Anti-FAIM2 rabbit polyclonal antibody
Applications	ELISA, WB, IHC
Immunogen	Fusion protein of human FAIM2
Reactivity	Human, Mouse, Rat
Content	0.3 mg/ml
Host species	Rabbit
Ig class	Immunogen-specific rabbit IgG
Purification	Antigen affinity purification

Target information

Symbol	FAIM2
Full name	Fas apoptotic inhibitory molecule 2

Synonyms LFG; LFG2; NGP35; NMP35; TMBIM2

Swissprot Q9BWQ8

Target Background

FAIM2 (Fas apoptotic inhibitory molecule 2), also known as LFG (Protein lifeguard), TMBIM2 (Transmembrane BAX inhibitor motif-containing protein 2) and NMP35 (neural membrane protein 35), is a 316 amino acid multipass membrane protein that uniquely protects cells from Fas-induced apoptosis. Though widely expressed, FAIM2 expression is highest in hippocampus. FAIM2 contains seven transmembrane domains and resembles Bax Inhibitor-1, another anti-apoptotic protein.

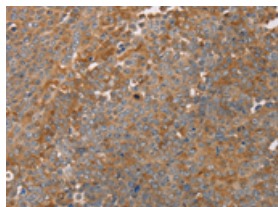
Applications

Immunohistochemistry

Predicted cell location: Cytoplasm

Positive control: Human ovarian cancer

Recommended dilution: 50-200

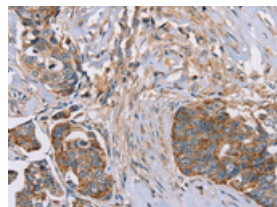


The image on the left is immunohistochemistry of paraffin-embedded Human ovarian cancer tissue using ml222335(FAIM2 Antibody) at dilution 1/30, on the right is treated with fusion protein. (Original magnification: $\times 200$)

Predicted cell location: Cytoplasm

Positive control: Human cervical cancer

Recommended dilution: 50-200



The image on the left is immunohistochemistry of paraffin-embedded Human cervical cancer tissue using ml222335(FAIM2 Antibody) at dilution 1/30, on the right is treated with fusion protein. (Original magnification: $\times 200$)

Western blotting

Predicted band size: 35 kDa

Positive control: A172 and Raji cells

Recommended dilution: 500-2000

Gel: 8%SDS-PAGE

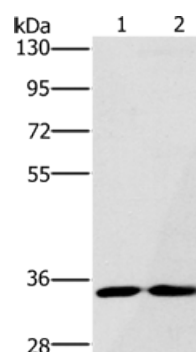
Lysate: 40 μ g

Lane 1-2: A172 cells, Raji cells

Primary antibody: ml222335(FAIM2 Antibody) at dilution 1/500

Secondary antibody: Goat anti rabbit IgG at 1/8000 dilution

Exposure time: 30 seconds



ELISA

Recommended dilution: 2000-5000

联系电话: 4008-898-798, 021-61725725

联系QQ: 2881505695, 2881505696

邮箱: mlbio_cn@yeah.net

网址: www.mlbio.cn