

Anti-NAIF1 antibody

Cat. No.	ml221018
Package	25 µl/100 µl/200 µl
Storage	-20°C, pH7.4 PBS, 0.05% NaN ₃ , 40% Glycerol

Product overview

Description	Anti-NAIF1 rabbit polyclonal antibody
Applications	ELISA, WB, IHC
Immunogen	Full length fusion protein
Reactivity	Human, Mouse
Content	1.2 mg/ml
Host species	Rabbit
Ig class	Immunogen-specific rabbit IgG
Purification	Antigen affinity purification

Target information

Symbol	NAIF1
Full name	nuclear apoptosis inducing factor 1

Synonyms C9orf90, bA379C10.2, RP11-379C10.2

Swissprot Q69YI7

Target Background

Human NAIF1 is located on chromosome 9q34.11 and encodes 327 amino acids with a homeodomain-like region and two nuclear localization signals at its N-terminal region. NAIF1 is conserved across diverse species, including human, mouse, crab-eating macaque, dog, chicken and frog, and shares no obvious homology to any known genes or proteins. NAIF1 was predominantly localized in the nucleus. Overexpression of NAIF1 inhibited cell growth and induced apoptosis. Furthermore, NAIF1 transfection caused both decreases in mitochondrial membrane potential and caspase-3 activation. In summary, NAIF1 is a nuclear protein that induces apoptosis when overexpressed.

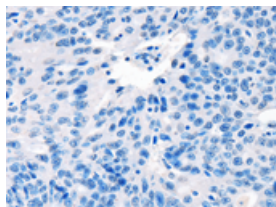
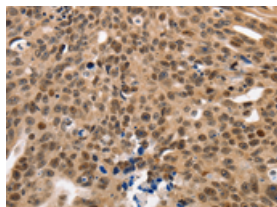
Applications

Immunohistochemistry

Predicted cell location: cytoplasm, Nucleus

Positive control: Human ovarian cancer

Recommended dilution: 50-200

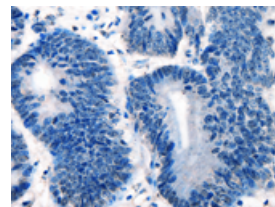
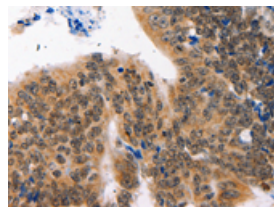


The image on the left is immunohistochemistry of paraffin-embedded Human ovarian cancer tissue using ml221018(NAIF1 Antibody) at dilution 1/60, on the right is treated with fusion protein. (Original magnification: $\times 200$)

Predicted cell location: cytoplasm, Nucleus

Positive control: Human colon cancer

Recommended dilution: 50-200



The image on the left is immunohistochemistry of paraffin-embedded Human colon cancer tissue using ml221018(NAIF1 Antibody) at dilution 1/60, on the right is treated with fusion protein. (Original magnification: $\times 200$)

Western blotting

Predicted band size: 35 kDa

Positive control: 293T cells

Recommended dilution: 500-2000

Gel: 12%SDS-PAGE

Lysate: 30 μ g

Lane: 293T cells

Primary antibody: ml221018(NAIF1 Antibody) at dilution 1/750

Secondary antibody: Goat anti rabbit IgG at 1/8000 dilution

Exposure time: 1 minute



ELISA

Recommended dilution: 2000-5000

联系电话: 4008-898-798, 021-61725725

联系QQ: 2881505695, 2881505696

邮箱: mlbio_cn@yeah.net

网址: www.mlbio.cn