

Anti-CRAT antibody

Cat. No.	ml224676
Package	25 µl/100 µl/200 µl
Storage	-20°C, pH7.4 PBS, 0.05% NaN ₃ , 40% Glycerol

Product overview

Description	Anti-CRAT rabbit polyclonal antibody
Applications	ELISA, WB, IHC
Immunogen	Fusion protein of human CRAT
Reactivity	Human, Mouse, Rat
Content	0.3 mg/ml
Host species	Rabbit
Ig class	Immunogen-specific rabbit IgG
Purification	Antigen affinity purification

Target information

Symbol	CRAT
Full name	carnitine O-acetyltransferase

Synonyms	CAT1
Swissprot	P43155

Target Background

This gene encodes carnitine acetyltransferase (CRAT), which is a key enzyme in the metabolic pathway in mitochondria, peroxisomes and endoplasmic reticulum. CRAT catalyzes the reversible transfer of acyl groups from an acyl-CoA thioester to carnitine and regulates the ratio of acylCoA/CoA in the subcellular compartments. Two transcript variants encoding different isoforms have been found for this gene.

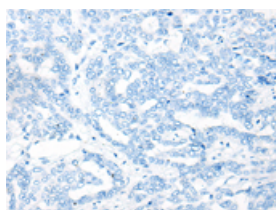
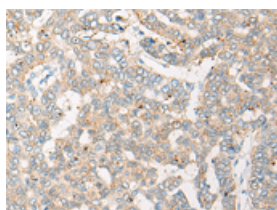
Applications

Immunohistochemistry

Predicted cell location: Cytoplasm

Positive control: Human liver cancer

Recommended dilution: 20-100

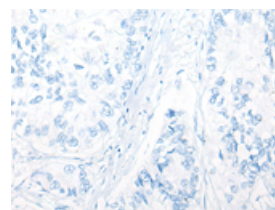
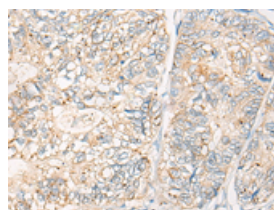


The image on the left is immunohistochemistry of paraffin-embedded Human liver cancer tissue using ml224676(CRAT Antibody) at dilution 1/20, on the right is treated with fusion protein. (Original magnification: ×200)

Predicted cell location: Cytoplasm

Positive control: Human gastric cancer

Recommended dilution: 20-100



The image on the left is immunohistochemistry of paraffin-embedded Human gastric cancer tissue using ml224676(CRAT Antibody) at dilution 1/20, on the right is treated with fusion protein. (Original magnification: ×200)

Western blotting

Predicted band size: 71 kDa

Positive control: A549 cell and Human heart tissue lysates

Recommended dilution: 200-1000

Gel: 8%SDS-PAGE

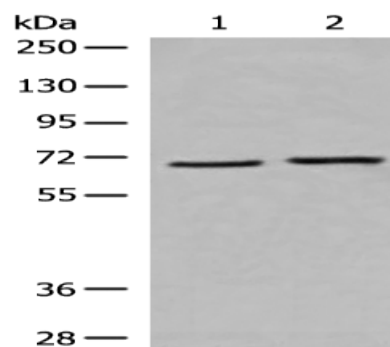
Lysate: 40 µg

Lane 1-2: A549 cell and Human heart tissue lysates

Primary antibody: ml224676(CRAT Antibody) at dilution 1/200

Secondary antibody: Goat anti rabbit IgG at 1/8000 dilution

Exposure time: 20 seconds



ELISA

Recommended dilution: 5000-10000

联系电话: 4008-898-798, 021-61725725

联系QQ: 2881505695, 2881505696

邮箱: mlbio_cn@yeah.net

网址: www.mlbio.cn