

Anti-TKFC antibody

Cat. No.	ml224729
Package	25 µl/100 µl/200 µl
Storage	-20°C, pH7.4 PBS, 0.05% NaN ₃ , 40% Glycerol

Product overview

Description	Anti-TKFC rabbit polyclonal antibody
Applications	ELISA, WB, IHC
Immunogen	Fusion protein of human TKFC
Reactivity	Human, Mouse, Rat
Content	0.84 mg/ml
Host species	Rabbit
Ig class	Immunogen-specific rabbit IgG
Purification	Antigen affinity purification

Target information

Symbol	TKFC
Full name	triokinase and FMN cyclase

Synonyms DAK; NET45

Swissprot Q3LXA3

Target Background

This gene is a member of the family of dihydroxyacetone kinases, which have a protein structure distinct from other kinases. The product of this gene phosphorylates dihydroxyacetone, and also catalyzes the formation of riboflavin 4',5'-phosphate (aka cyclin FMN) from FAD. Several alternatively spliced transcript variants have been identified, but the full-length nature of only one has been determined.

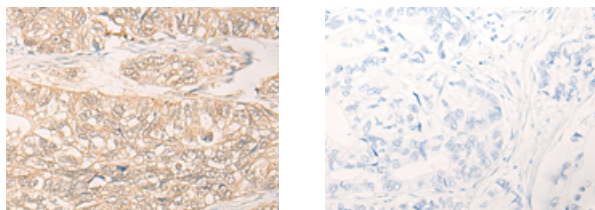
Applications

Immunohistochemistry

Predicted cell location: Nucleus

Positive control: Human gastric cancer

Recommended dilution: 30-150



The image on the left is immunohistochemistry of paraffin-embedded Human gastric cancer tissue using ml224729(TKFC Antibody) at dilution 1/30, on the right is treated with fusion protein. (Original magnification: ×200)

Western blotting

Predicted band size: 59 kDa

Positive control: HeLa, A549 and 823 cell lysates

Recommended dilution: 500-2000

Gel: 8%SDS-PAGE

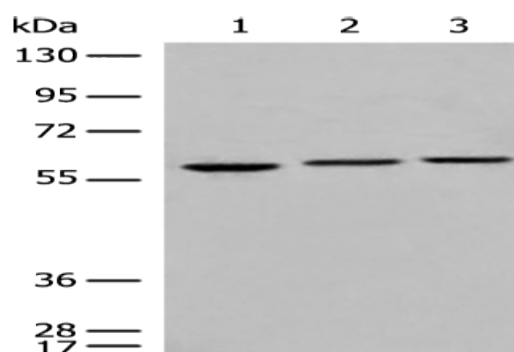
Lysate: 40 µg

Lane 1-3: Hela, A549 and 823 cell lysates

Primary antibody: ml224729(TKFC Antibody) at dilution 1/700

Secondary antibody: Goat anti rabbit IgG at 1/8000 dilution

Exposure time: 5 seconds



ELISA

Recommended dilution: 5000-10000

联系电话: 4008-898-798, 021-61725725

联系QQ: 2881505695, 2881505696

邮箱: mlbio_cn@yeah.net

网址: www.mlbio.cn