

Anti-CDH3 antibody

Cat. No.	ml221109
Package	25 µl/100 µl/200 µl
Storage	-20°C, pH7.4 PBS, 0.05% NaN ₃ , 40% Glycerol

Product overview

Description	Anti-CDH3 rabbit polyclonal antibody
Applications	ELISA, WB, IHC
Immunogen	Fusion protein of human CDH3
Reactivity	Human, Mouse
Content	0.1 mg/ml
Host species	Rabbit
Ig class	Immunogen-specific rabbit IgG
Purification	Antigen affinity purification

Target information

Symbol	CDH3
Full name	cadherin 3, type 1, P-cadherin (placental)

Synonyms CDHP; HJMD; PCAD

Swissprot P22223

Target Background

This gene is a classical cadherin from the cadherin superfamily. The encoded protein is a calcium-dependent cell-cell adhesion glycoprotein comprised of five extracellular cadherin repeats, a transmembrane region and a highly conserved cytoplasmic tail. This gene is located in a six-cadherin cluster in a region on the long arm of chromosome 16 that is involved in loss of heterozygosity events in breast and prostate cancer. In addition, aberrant expression of this protein is observed in cervical adenocarcinomas. Mutations in this gene have been associated with congenital hypotrichosis with juvenile macular dystrophy.

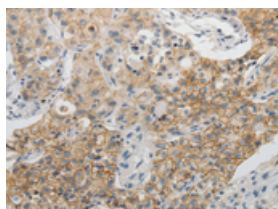
Applications

Immunohistochemistry

Predicted cell location: Cell membrane, Cytoplasm

Positive control: Human lung cancer

Recommended dilution: 5-20

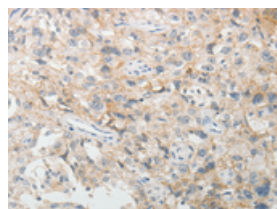


The image on the left is immunohistochemistry of paraffin-embedded Human lung cancer tissue using ml221109(CDH3 Antibody) at dilution 1/5, on the right is treated with fusion protein. (Original magnification: $\times 200$)

Predicted cell location: Cell membrane, Cytoplasm

Positive control: Human esophagus cancer

Recommended dilution: 5-20



The image on the left is immunohistochemistry of paraffin-embedded Human esophagus cancer tissue using ml221109(CDH3 Antibody) at dilution 1/5, on the right is treated with fusion protein. (Original magnification: $\times 200$)

Western blotting

Predicted band size: 91 kDa

Positive control: HepG2 cells and mouse brain tissue

Recommended dilution: 200-1000

Gel: 8%SDS-PAGE

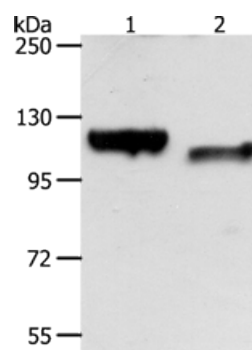
Lysate: 40 μ g

Lane 1-2: HepG2 cells, mouse brain tissue

Primary antibody: ml221109(CDH3 Antibody) at dilution 1/100

Secondary antibody: Goat anti rabbit IgG at 1/8000 dilution

Exposure time: 1 minute



ELISA

Recommended dilution: 1000-2000

联系电话: 4008-898-798, 021-61725725

联系QQ: 2881505695, 2881505696

邮箱: mlbio_cn@yeah.net

网址: www.mlbio.cn