

Anti-PDCD10 antibody

Cat. No.	ml221116
Package	25 µl/100 µl/200 µl
Storage	-20°C, pH7.4 PBS, 0.05% NaN ₃ , 40% Glycerol

Product overview

Description	Anti-PDCD10 rabbit polyclonal antibody
Applications	ELISA, WB, IHC
Immunogen	Fusion protein of human PDCD10
Reactivity	Human, Mouse, Rat
Content	0.429 mg/ml
Host species	Rabbit
Ig class	Immunogen-specific rabbit IgG
Purification	Antigen affinity purification

Target information

Symbol	PDCD10
Full name	programmed cell death 10

Synonyms CCM3, TFAR15

Swissprot Q9BUL8

Target Background

This gene encodes an evolutionarily conserved protein associated with cell apoptosis. The protein interacts with the serine/threonine protein kinase MST4 to modulate the extracellular signal-regulated kinase (ERK) pathway. It also interacts with and is phosphorylated by serine/threonine kinase 25, and is thought to function in a signaling pathway essential for vascular development. Mutations in this gene are one cause of cerebral cavernous malformations, which are vascular malformations that cause seizures and cerebral hemorrhages. Multiple alternatively spliced variants, encoding the same protein, have been identified.

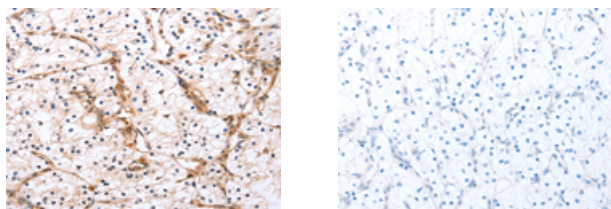
Applications

Immunohistochemistry

Predicted cell location: Cytoplasm

Positive control: Human renal cancer

Recommended dilution: 15-50



The image on the left is immunohistochemistry of paraffin-embedded Human renal cancer tissue using ml221116(PDCD10 Antibody) at dilution 1/20, on the right is treated with fusion protein. (Original magnification: $\times 200$)

Western blotting

Predicted band size: 25 kDa

Positive control: Hela cells, human fetal brain tissue and K562 cells

Recommended dilution: 200-1000

Gel: 12%SDS-PAGE

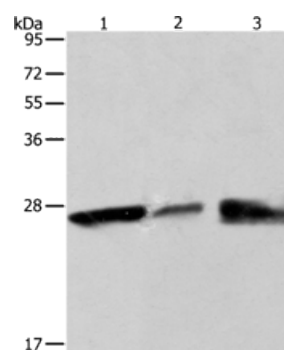
Lysate: 50 µg

Lane 1-3: Hela cells, human fetal brain tissue, K562 cells

Primary antibody: ml221116(PDCD10 Antibody) at dilution 1/200

Secondary antibody: Goat anti rabbit IgG at 1/8000 dilution

Exposure time: 2 minutes



ELISA

Recommended dilution: 1000-5000

联系电话: 4008-898-798, 021-61725725

联系QQ: 2881505695, 2881505696

邮箱: mlbio_cn@yeah.net

网址: www.mlbio.cn