

Anti-DENND1B antibody

Cat. No.	ml224791
Package	25 µl/100 µl/200 µl
Storage	-20°C, pH7.4 PBS, 0.05% NaN ₃ , 40% Glycerol

Product overview

Description	Anti-DENND1B rabbit polyclonal antibody
Applications	ELISA, WB
Immunogen	Fusion protein of human DENND1B
Reactivity	Human, Mouse
Content	0.54 mg/ml
Host species	Rabbit
Ig class	Immunogen-specific rabbit IgG
Purification	Antigen affinity purification

Target information

Symbol	DENND1B
Full name	DENN domain containing 1B
Synonyms	FAM31B; C1ORF18; C1orf218
Swissprot	Q6P3S1

Target Background

Clathrin (see MIM 118955)-mediated endocytosis is a major mechanism for internalization of proteins and lipids. Members of the connectenn family, such as DENND1B, function as guanine nucleotide exchange factors (GEFs) for the early endosomal small GTPase RAB35 (MIM 604199) and bind to clathrin and clathrin adaptor protein-2 (AP2; see MIM 601024). Thus, connectenns link RAB35 activation with the clathrin machinery.

订购热线: 4008-898-798

Applications

Western blotting

Predicted band size: 86 kDa

Positive control: Human fetal brain tissue and mouse brain tissue lysates

Recommended dilution: 500-2000

Gel: 6%SDS-PAGE

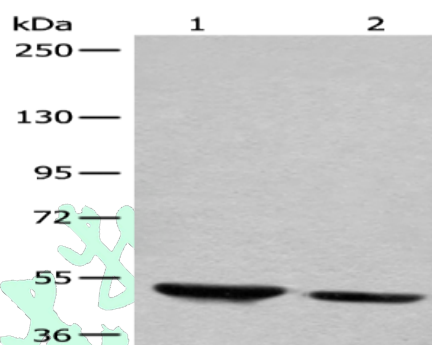
Lysate: 40 µg

Lane 1-2: Human fetal brain tissue and mouse brain tissue lysates

Primary antibody: ml224791(DENND1B Antibody) at dilution 1/400

Secondary antibody: Goat anti rabbit IgG at 1/8000 dilution

Exposure time: 1 minute



ELISA

Recommended dilution: 5000-10000

联系电话: 4008-898-798, 021-61725725

联系QQ: 2881505695, 2881505696

邮箱: mlbio_cn@yeah.net

网址: www.mlbio.cn