

Anti-ITM2B antibody

Cat. No.	ml224809
Package	25 µl/100 µl/200 µl
Storage	-20°C, pH7.4 PBS, 0.05% NaN ₃ , 40% Glycerol

Product overview

Description	Anti-ITM2B rabbit polyclonal antibody
Applications	ELISA, WB, IHC
Immunogen	Fusion protein of human ITM2B
Reactivity	Human, Mouse, Rat
Content	1.2 mg/ml
Host species	Rabbit
Ig class	Immunogen-specific rabbit IgG
Purification	Antigen affinity purification

Target information

Symbol	ITM2B
Full name	integral membrane protein 2B

Synonyms	BRI; FBD; ABRI; BRI2; E25B; E3-16; RDGCA; imBRI2; BRICD2B
Swissprot	Q9Y287

Target Background

Amyloid precursor proteins are processed by beta-secretase and gamma-secretase to produce beta-amyloid peptides which form the characteristic plaques of Alzheimer disease. This gene encodes a transmembrane protein which is processed at the C-terminus by furin or furin-like proteases to produce a small secreted peptide which inhibits the deposition of beta-amyloid. Mutations which result in extension of the C-terminal end of the encoded protein, thereby increasing the size of the secreted peptide, are associated with two neurogenerative diseases, familial British dementia and familial Danish dementia.

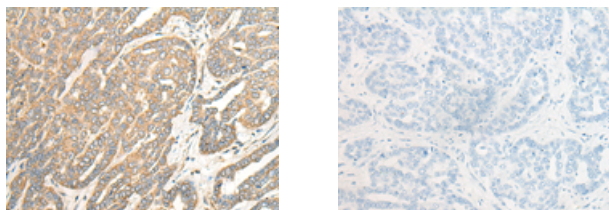
Applications

Immunohistochemistry

Predicted cell location: Cytoplasm

Positive control: Human liver cancer

Recommended dilution: 30-150



The image on the left is immunohistochemistry of paraffin-embedded Human liver cancer tissue using ml224809(ITM2B Antibody) at dilution 1/35, on the right is treated with fusion protein. (Original magnification: ×200)

Western blotting

Predicted band size: 30 kDa

Positive control: Rat kidney tissue lysate

Recommended dilution: 500-2000

Gel: 12%SDS-PAGE

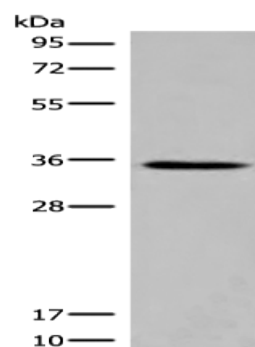
Lysate: 40 μ g

Lane: Rat kidney tissue lysate

Primary antibody: ml224809(ITM2B Antibody) at dilution 1/500

Secondary antibody: Goat anti rabbit IgG at 1/8000 dilution

Exposure time: 30 seconds



ELISA

Recommended dilution: 5000-10000

联系电话: 4008-898-798, 021-61725725

联系QQ: 2881505695, 2881505696

邮箱: mlbio_cn@yeah.net

网址: www.mlbio.cn