

## Anti-FASTKD2 antibody

<b>Cat. No.</b>	ml222351
<b>Package</b>	25 µl/100 µl/200 µl
<b>Storage</b>	-20°C, pH7.4 PBS, 0.05% NaN <sub>3</sub> , 40% Glycerol

### Product overview

<b>Description</b>	Anti-FASTKD2 rabbit polyclonal antibody
<b>Applications</b>	ELISA, WB, IHC
<b>Immunogen</b>	Fusion protein of human FASTKD2
<b>Reactivity</b>	Human
<b>Content</b>	0.4 mg/ml
<b>Host species</b>	Rabbit
<b>Ig class</b>	Immunogen-specific rabbit IgG
<b>Purification</b>	Antigen affinity purification

### Target information

<b>Symbol</b>	FASTKD2
<b>Full name</b>	FAST kinase domains 2

**Synonyms** KIAA0971

**Swissprot** Q9NYY8

#### **Target Background**

This gene encodes a protein that is localized in the mitochondrial inner compartment and that may play a role in mitochondrial apoptosis. Nonsense mutations have been reported to result in cytochrome c oxidase deficiency.

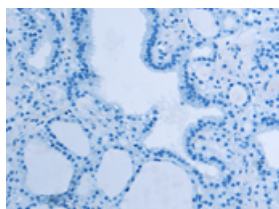
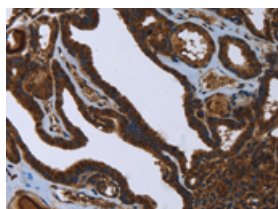
## Applications

### Immunohistochemistry

Predicted cell location: Nucleus or Cytoplasm

Positive control: Human thyroid cancer

Recommended dilution: 50-200

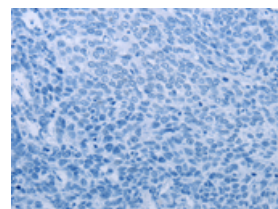
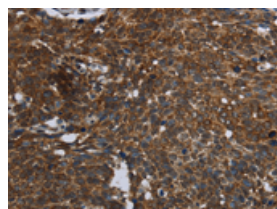


The image on the left is immunohistochemistry of paraffin-embedded Human thyroid cancer tissue using ml222351(FASTKD2 Antibody) at dilution 1/45, on the right is treated with fusion protein. (Original magnification:  $\times 200$ )

Predicted cell location: Nucleus or Cytoplasm

Positive control: Human cervical cancer

Recommended dilution: 50-200



The image on the left is immunohistochemistry of paraffin-embedded Human cervical cancer tissue using ml222351(FASTKD2 Antibody) at dilution 1/45, on the right is treated with fusion protein. (Original magnification:  $\times 200$ )

### Western blotting

Predicted band size: 81 kDa

Positive control: Hela, LoVo and HepG2 cells

Recommended dilution: 500-2000

Gel: 6%SDS-PAGE

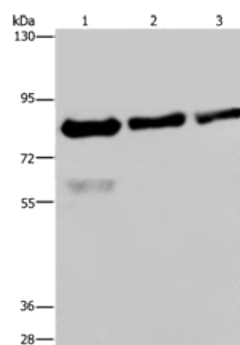
Lysate: 40 µg

Lane 1-3: Hela cells, LoVo cells, HepG2 cells

Primary antibody: ml222351 (FASTKD2 Antibody) at dilution 1/500

Secondary antibody: Goat anti rabbit IgG at 1/8000 dilution

Exposure time: 40 seconds



## ELISA

Recommended dilution: 2000-5000

联系电话: 4008-898-798, 021-61725725

联系QQ: 2881505695, 2881505696

邮箱: [mlbio\\_cn@yeah.net](mailto:mlbio_cn@yeah.net)

网址: [www.mlbio.cn](http://www.mlbio.cn)