

## Anti-FBP1 antibody

<b>Cat. No.</b>	ml222353
<b>Package</b>	25 µl/100 µl/200 µl
<b>Storage</b>	-20°C, pH7.4 PBS, 0.05% NaN <sub>3</sub> , 40% Glycerol

### Product overview

<b>Description</b>	Anti-FBP1 rabbit polyclonal antibody
<b>Applications</b>	ELISA, WB, IHC
<b>Immunogen</b>	Fusion protein of human FBP1
<b>Reactivity</b>	Human, Mouse
<b>Content</b>	0.5 mg/ml
<b>Host species</b>	Rabbit
<b>Ig class</b>	Immunogen-specific rabbit IgG
<b>Purification</b>	Antigen affinity purification

### Target information

<b>Symbol</b>	FBP1
<b>Full name</b>	fructose-1,6-bisphosphatase 1

<b>Synonyms</b>	FBP
<b>Swissprot</b>	P09467

#### Target Background

Fructose-1,6-bisphosphatase 1, a gluconeogenesis regulatory enzyme, catalyzes the hydrolysis of fructose 1,6-bisphosphate to fructose 6-phosphate and inorganic phosphate. Fructose-1,6-diphosphatase deficiency is associated with hypoglycemia and metabolic acidosis.

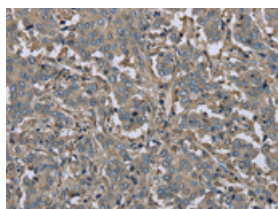
## Applications

### Immunohistochemistry

Predicted cell location: Cytoplasm

Positive control: Human liver cancer

Recommended dilution: 50-200

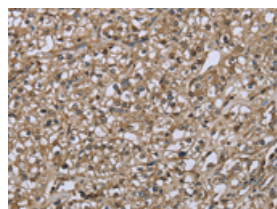


The image on the left is immunohistochemistry of paraffin-embedded Human liver cancer tissue using ml222353(FBP1 Antibody) at dilution 1/30, on the right is treated with fusion protein. (Original magnification:  $\times 200$ )

Predicted cell location: Cytoplasm

Positive control: Human prostate cancer

Recommended dilution: 50-200



The image on the left is immunohistochemistry of paraffin-embedded Human prostate cancer tissue using ml222353(FBP1 Antibody) at dilution 1/30, on the right is treated with fusion protein. (Original magnification:  $\times 200$ )

### Western blotting

Predicted band size: 37 kDa

Positive control: Mouse stomach and human fetal liver tissue, MCF-7 cells and mouse liver tissue

Recommended dilution: 500-2000

Gel: 8%SDS-PAGE

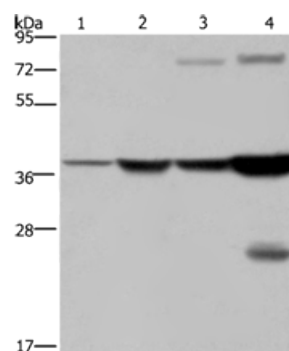
Lysate: 40 µg

Lane 1-4: Mouse stomach tissue, human fetal liver tissue, MCF7 cells, mouse liver tissue

Primary antibody: ml222353(FBP1 Antibody) at dilution 1/550

Secondary antibody: Goat anti rabbit IgG at 1/8000 dilution

Exposure time: 10 seconds



## ELISA

Recommended dilution: 2000-5000

联系电话: 4008-898-798, 021-61725725

联系QQ: 2881505695, 2881505696

邮箱: [mlbio\\_cn@yeah.net](mailto:mlbio_cn@yeah.net)

网址: [www.mlbio.cn](http://www.mlbio.cn)