

Anti-PTPN11 antibody

Cat. No.	ml221216
Package	25 µl/100 µl/200 µl
Storage	-20°C, pH7.4 PBS, 0.05% NaN ₃ , 40% Glycerol

Product overview

Description	Anti-PTPN11 rabbit polyclonal antibody
Applications	ELISA, WB, IHC
Immunogen	Fusion protein of human PTPN11
Reactivity	Human, Mouse, Rat
Content	0.3 mg/ml
Host species	Rabbit
Ig class	Immunogen-specific rabbit IgG
Purification	Antigen affinity purification

Target information

Symbol	PTPN11
Full name	protein tyrosine phosphatase, non-receptor type 11

Synonyms CFC, NS1, SHP2, BPTP3, PTP2C, PTP-1D, SH-PTP2, SH-PTP

Swissprot Q06124

Target Background

The protein encoded by this gene is a member of the protein tyrosine phosphatase (PTP) family. PTPs are known to be signaling molecules that regulate a variety of cellular processes including cell growth, differentiation, mitotic cycle, and oncogenic transformation. This PTP contains two tandem Src homology-2 domains, which function as phospho-tyrosine binding domains and mediate the interaction of this PTP with its substrates. This PTP is widely expressed in most tissues and plays a regulatory role in various cell signaling events that are important for a diversity of cell functions, such as mitogenic activation, metabolic control, transcription regulation, and cell migration. Mutations in this gene are a cause of Noonan syndrome as well as acute myeloid leukemia. Two transcript variants encoding different isoforms have been found for this gene.

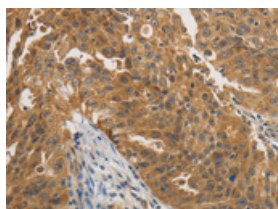
Applications

Immunohistochemistry

Predicted cell location: Cytoplasm

Positive control: Human ovarian cancer

Recommended dilution: 25-100

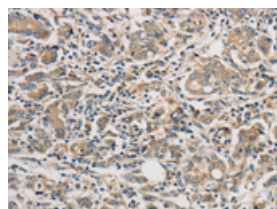


The image on the left is immunohistochemistry of paraffin-embedded Human ovarian cancer tissue using ml221216(PTPN11 Antibody) at dilution 1/25, on the right is treated with fusion protein. (Original magnification: $\times 200$)

Predicted cell location: Cytoplasm

Positive control: Human gastric cancer

Recommended dilution: 25-100



The image on the left is immunohistochemistry of paraffin-embedded Human gastric cancer tissue using ml221216(PTPN11 Antibody) at dilution 1/25, on the right is treated with fusion protein. (Original magnification: $\times 200$)

Western blotting

Predicted band size: 68 kDa

Positive control: NIH/3T3 and hela cells

Recommended dilution: 200-1000

Gel: 10%SDS-PAGE

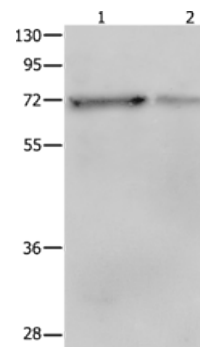
Lysate: 40 µg

Lane 1-2: NIH/3T3 cells, hela cells

Primary antibody: ml221216(PTPN11 Antibody) at dilution 1/400

Secondary antibody: Goat anti rabbit IgG at 1/8000 dilution

Exposure time: 1 minute



ELISA

Recommended dilution: 1000-2000

联系电话: 4008-898-798, 021-61725725

联系QQ: 2881505695, 2881505696

邮箱: mlbio_cn@yeah.net

网址: www.mlbio.cn