

Anti-FRK antibody

Cat. No.	ml222386
Package	25 µl/100 µl/200 µl
Storage	-20°C, pH7.4 PBS, 0.05% NaN ₃ , 40% Glycerol

Product overview

Description	Anti-FRK rabbit polyclonal antibody
Applications	ELISA, WB, IHC
Immunogen	Fusion protein of human FRK
Reactivity	Human, Mouse, Rat
Content	0.5 mg/ml
Host species	Rabbit
Ig class	Immunogen-specific rabbit IgG
Purification	Antigen affinity purification

Target information

Symbol	FRK
Full name	fyn-related kinase

Synonyms GTK; RAK; PTK5

Swissprot P42685

Target Background

The protein encoded by this gene belongs to the TYR family of protein kinases. This tyrosine kinase is a nuclear protein and may function during G1 and S phase of the cell cycle and suppress growth.

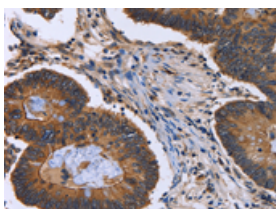
Applications

Immunohistochemistry

Predicted cell location: Cytoplasm

Positive control: Human colon cancer

Recommended dilution: 50-200

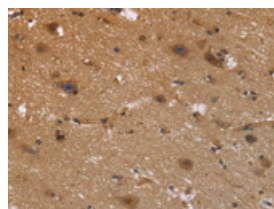


The image is immunohistochemistry of paraffin-embedded Human colon cancer tissue using ml222386(FRK Antibody) at dilution 1/40. (Original magnification: ×200)

Predicted cell location: Cytoplasm

Positive control: Human brain

Recommended dilution: 50-200



The image is immunohistochemistry of paraffin-embedded Human brain tissue using ml222386(FRK Antibody) at dilution 1/40. (Original magnification: ×200)

Western blotting

Predicted band size: 58 kDa

Positive control: A431 cells

Recommended dilution: 500-2000

Gel: 6% SDS-PAGE

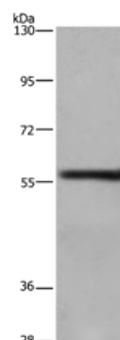
Lysate: 40 µg

Lane: A431 cells

Primary antibody: ml222386(FRK Antibody) at dilution 1/1000

Secondary antibody: Goat anti rabbit IgG at 1/8000 dilution

Exposure time: 5 minutes



mlbio 酶联生物
Good elisakit producers
订购热线: 4008-898-798

ELISA

Recommended dilution: 2000-5000

联系电话: 4008-898-798, 021-61725725

联系QQ: 2881505695, 2881505696

邮箱: mlbio_cn@yeah.net

网址: www.mlbio.cn