

Anti-DIABLO antibody

Cat. No.	ml221233
Package	25 µl/100 µl/200 µl
Storage	-20°C, pH7.4 PBS, 0.05% NaN ₃ , 40% Glycerol

Product overview

Description	Anti-DIABLO rabbit polyclonal antibody
Applications	ELISA, WB, IHC
Immunogen	Fusion protein of human DIABLO
Reactivity	Human, Mouse
Content	0.4 mg/ml
Host species	Rabbit
Ig class	Immunogen-specific rabbit IgG
Purification	Antigen affinity purification

Target information

Symbol	DIABLO
Full name	Diablo, IAP-binding mitochondrial protein

Synonyms SMAC; SMAC3; DFNA64; DIABLO-S

Swissprot Q9NR28

Target Background

This gene encodes an inhibitor of apoptosis protein (IAP)-binding protein. The encoded mitochondrial protein enters the cytosol when cells undergo apoptosis, and it moderates the caspase inhibition of IAPs. Multiple polyadenylation sites have been found for this gene. Four alternatively spliced transcript variants have been described for this gene, with two of them encoding different isoforms and the other two probably not encoding a protein. Ubiquitously expressed with highest expression in testis. Expression is also high in heart, liver, kidney, spleen, prostate and ovary. Low in brain, lung, thymus and peripheral blood leukocytes. Isoform 3 is ubiquitously expressed.

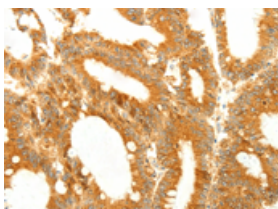
Applications

Immunohistochemistry

Predicted cell location: Cytoplasm

Positive control: Human colon cancer

Recommended dilution: 50-200

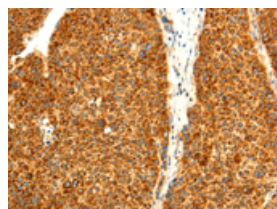


The image on the left is immunohistochemistry of paraffin-embedded Human colon cancer tissue using m1221233(DIABLO Antibody) at dilution 1/50, on the right is treated with fusion protein. (Original magnification: $\times 200$)

Predicted cell location: Cytoplasm

Positive control: Human liver cancer

Recommended dilution: 50-200



The image on the left is immunohistochemistry of paraffin-embedded Human liver cancer tissue using m1221233(DIABLO Antibody) at dilution 1/50, on the right is treated with fusion protein. (Original magnification: $\times 200$)

Western blotting

Predicted band size: 27 kDa

Positive control: Lncap, SKOV3, MCF7 and 293T cells

Recommended dilution: 1000-5000

Gel: 12%SDS-PAGE

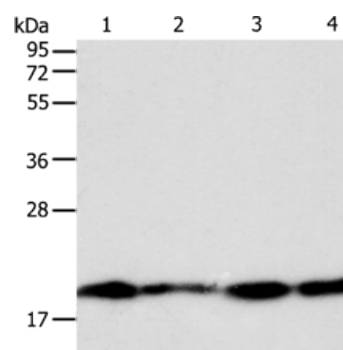
Lysate: 40 µg

Lane 1-4: Lncap cells, SKOV3 cells, MCF7 cells, 293T cells

Primary antibody: ml221233(DIABLO Antibody) at dilution 1/800

Secondary antibody: Goat anti rabbit IgG at 1/8000 dilution

Exposure time: 1 second



ELISA

Recommended dilution: 2000-10000

联系电话: 4008-898-798, 021-61725725

联系QQ: 2881505695, 2881505696

邮箱: mlbio_cn@yeah.net

网址: www.mlbio.cn