

## Anti-FAIM2 antibody

<b>Cat. No.</b>	ml122335
<b>Package</b>	25 µl/100 µl/200 µl
<b>Storage</b>	-20°C, pH7.4 PBS, 0.05% NaN <sub>3</sub> , 40% Glycerol

### Product overview

<b>Description</b>	Anti-FAIM2 rabbit polyclonal antibody
<b>Applications</b>	ELISA, IHC
<b>Immunogen</b>	Fusion protein of human FAIM2
<b>Reactivity</b>	Human, Mouse, Rat
<b>Content</b>	0.4 mg/ml
<b>Host species</b>	Rabbit
<b>Ig class</b>	Immunogen-specific rabbit IgG
<b>Purification</b>	Antigen affinity purification

### Target information

<b>Symbol</b>	FAIM2
<b>Full name</b>	Fas apoptotic inhibitory molecule 2
<b>Synonyms</b>	LFG; LFG2; NGP35; NMP35; TMBIM2
<b>Swissprot</b>	Q9BWQ8

### Target Background

FAIM2 (Fas apoptotic inhibitory molecule 2), also known as LFG (Protein lifeguard), TMBIM2 (Transmembrane BAX inhibitor motif-containing protein 2) and NMP35 (neural membrane protein 35), is a 316 amino acid multipass membrane protein that uniquely protects cells from Fas-induced apoptosis. Though widely expressed, FAIM2 expression is highest in hippocampus. FAIM2 contains seven transmembrane domains and resembles Bax Inhibitor-1, another anti-apoptotic protein. Overexpression of FAIM2 results in decreased caspase activation and reduced incidence of programmed cell death.

订购热线: 4008-898-798

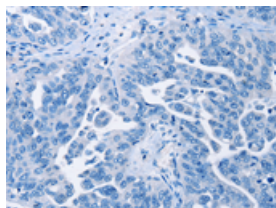
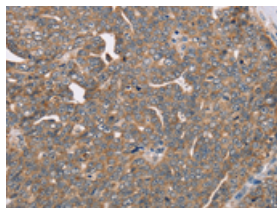
## Applications

### Immunohistochemistry

Predicted cell location: Cytoplasm

Positive control: Human cervical cancer

Recommended dilution: 50-200

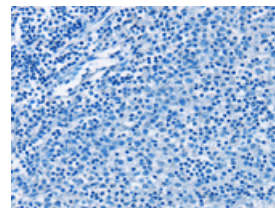
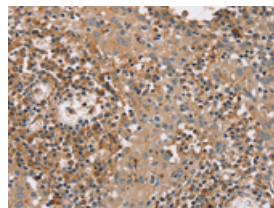


The image on the left is immunohistochemistry of paraffin-embedded Human cervical cancer tissue using ml122335(FAIM2 Antibody) at dilution 1/40, on the right is treated with fusion protein. (Original magnification:  $\times 200$ )

Predicted cell location: Cytoplasm

Positive control: Human tonsil

Recommended dilution: 50-200



The image on the left is immunohistochemistry of paraffin-embedded Human tonsil tissue using ml122335(FAIM2 Antibody) at dilution 1/40, on the right is treated with fusion protein. (Original magnification:  $\times 200$ )

### ELISA

Recommended dilution: 2000-5000

联系电话: 4008-898-798, 021-61725725

联系QQ: 2881505695, 2881505696

邮箱: [mlbio\\_cn@yeah.net](mailto:mlbio_cn@yeah.net)

网址: [www.mlbio.cn](http://www.mlbio.cn)