

Anti-GLUL antibody

Cat. No.	ml222427
Package	25 µl/100 µl/200 µl
Storage	-20°C, pH7.4 PBS, 0.05% NaN ₃ , 40% Glycerol

Product overview

Description	Anti-GLUL rabbit polyclonal antibody
Applications	ELISA, WB, IHC
Immunogen	Fusion protein of human GLUL
Reactivity	Human, Mouse, Rat
Content	0.4 mg/ml
Host species	Rabbit
Ig class	Immunogen-specific rabbit IgG
Purification	Antigen affinity purification

Target information

Symbol	GLUL
Full name	glutamate-ammonia ligase

Synonyms GS; GLNS; PIG43; PIG59

Swissprot P15104

Target Background

The protein encoded by this gene belongs to the glutamine synthetase family. It catalyzes the synthesis of glutamine from glutamate and ammonia. Glutamine is a main source of energy and is involved in cell proliferation, inhibition of apoptosis, and cell signaling. This gene is expressed during early fetal stages, and plays an important role in controlling body pH by removing ammonia from circulation. Mutations in this gene are associated with congenital glutamine deficiency. Several alternatively spliced transcript variants have been found for this gene.

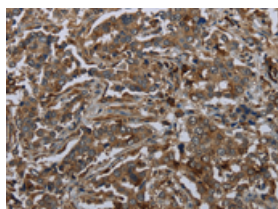
Applications

Immunohistochemistry

Predicted cell location: Cytoplasm

Positive control: Human liver cancer

Recommended dilution: 100-300

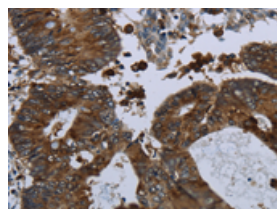


The image on the left is immunohistochemistry of paraffin-embedded Human liver cancer tissue using ml222427(GLUL Antibody) at dilution 1/60, on the right is treated with fusion protein. (Original magnification: $\times 200$)

Predicted cell location: Cytoplasm

Positive control: Human colon cancer

Recommended dilution: 100-300



The image on the left is immunohistochemistry of paraffin-embedded Human colon cancer tissue using ml222427(GLUL Antibody) at dilution 1/60, on the right is treated with fusion protein. (Original magnification: $\times 200$)

Western blotting

Predicted band size: 42 kDa

Positive control: Mouse liver and brain tissue

Recommended dilution: 500-2000

Gel: 8%SDS-PAGE

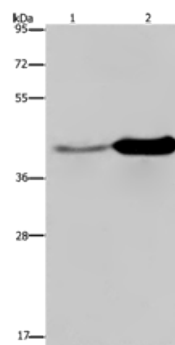
Lysate: 40 μ g

Lane 1-2: Mouse liver tissue, Mouse brain tissue

Primary antibody: ml222427(GLUL Antibody) at dilution 1/650

Secondary antibody: Goat anti rabbit IgG at 1/8000 dilution

Exposure time: 10 seconds



ELISA

Recommended dilution: 2000-5000

联系电话: 4008-898-798, 021-61725725

联系QQ: 2881505695, 2881505696

邮箱: mlbio_cn@yeah.net

网址: www.mlbio.cn