

## Anti-SYT7 antibody

<b>Cat. No.</b>	ml221275
<b>Package</b>	25 µl/100 µl/200 µl
<b>Storage</b>	-20°C, pH7.4 PBS, 0.05% NaN <sub>3</sub> , 40% Glycerol

### Product overview

<b>Description</b>	Anti-SYT7 rabbit polyclonal antibody
<b>Applications</b>	ELISA, WB, IHC
<b>Immunogen</b>	Fusion protein of human SYT7
<b>Reactivity</b>	Human, Mouse
<b>Content</b>	0.1 mg/ml
<b>Host species</b>	Rabbit
<b>Ig class</b>	Immunogen-specific rabbit IgG
<b>Purification</b>	Antigen affinity purification

### Target information

<b>Symbol</b>	SYT7
<b>Full name</b>	synaptotagmin VII

**Synonyms**                      IPCA7, IPCA-7, SYTVII, PCANAP7, SYT-VII

**Swissprot**                      O43581

#### **Target Background**

This gene is a member of the synaptotagmin gene family and encodes a protein similar to other family members that mediate calcium-dependent regulation of membrane trafficking in synaptic transmission. A similar protein in rodents mediates hormone secretion and lysosome exocytosis. In humans, expression of this gene has been associated with prostate cancer. Alternatively spliced transcript variants encoding multiple isoforms have been observed for this gene.

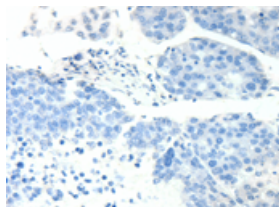
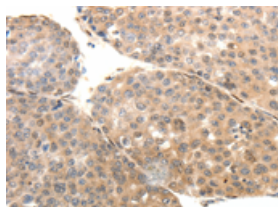
## Applications

### Immunohistochemistry

Predicted cell location: Cytoplasm, Nucleus

Positive control: Human liver cancer

Recommended dilution: 15-50

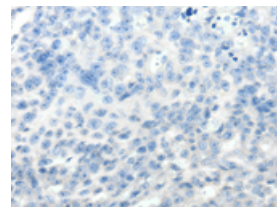
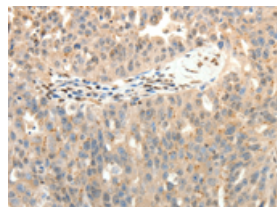


The image on the left is immunohistochemistry of paraffin-embedded Human liver cancer tissue using ml221275(SYT7 Antibody) at dilution 1/15, on the right is treated with fusion protein. (Original magnification: ×200)

Predicted cell location: Cytoplasm, Nucleus

Positive control: Human ovarian cancer

Recommended dilution: 15-50



The image on the left is immunohistochemistry of paraffin-embedded Human ovarian cancer tissue using ml221275(SYT7 Antibody) at dilution 1/15, on the right is treated with fusion protein. (Original magnification: ×200)

### Western blotting

Predicted band size: 46 kDa

Positive control: SKOV3 cells

Recommended dilution: 200-1000

Gel: 10%SDS-PAGE

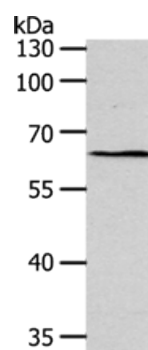
Lysate: 40  $\mu$ g

Lane: SKOV3 cells

Primary antibody: ml221275(SYT7 Antibody) at dilution 1/200

Secondary antibody: Goat anti rabbit IgG at 1/8000 dilution

Exposure time: 5 minutes



## ELISA

Recommended dilution: 1000-5000

联系电话: 4008-898-798, 021-61725725

联系QQ: 2881505695, 2881505696

邮箱: [mlbio\\_cn@yeah.net](mailto:mlbio_cn@yeah.net)

网址: [www.mlbio.cn](http://www.mlbio.cn)