

## Anti-MB antibody

<b>Cat. No.</b>	ml222443
<b>Package</b>	25 µl/100 µl/200 µl
<b>Storage</b>	-20°C, pH7.4 PBS, 0.05% NaN <sub>3</sub> , 40% Glycerol

### Product overview

<b>Description</b>	Anti-MB rabbit polyclonal antibody
<b>Applications</b>	ELISA, WB
<b>Immunogen</b>	Full length fusion protein
<b>Reactivity</b>	Human, Mouse, Rat
<b>Content</b>	0.7 mg/ml
<b>Host species</b>	Rabbit
<b>Ig class</b>	Immunogen-specific rabbit IgG
<b>Purification</b>	Antigen affinity purification

### Target information

<b>Symbol</b>	MB
<b>Full name</b>	myoglobin
<b>Synonyms</b>	PVALB; myoglobin
<b>Swissprot</b>	P02144

### Target Background

This gene encodes a member of the globin superfamily and is expressed in skeletal and cardiac muscles. The encoded protein is a haemoprotein contributing to intracellular oxygen storage and transcellular facilitated diffusion of oxygen. At least three alternatively spliced transcript variants encoding the same protein have been reported.

订购热线: 4008-898-798

## Applications

### Western blotting

Predicted band size: 17 kDa

Positive control: Human heart tissue, Mouse heart tissue, Rat heart tissue and Human muscle tissue lysates

Recommended dilution: 500-2000

Gel: 12% SDS-PAGE

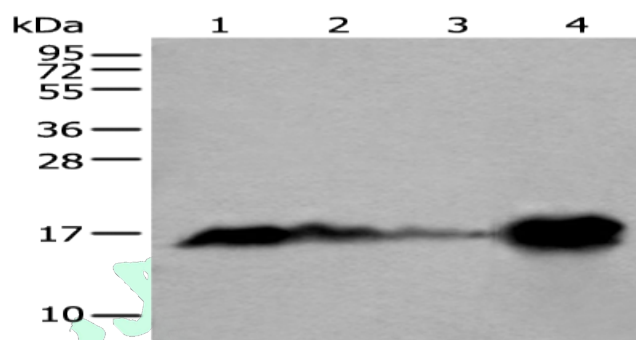
Lysate: 40 µg

Lane 1-4: Human heart tissue, Mouse heart tissue, Rat heart tissue and Human muscle tissue lysates

Primary antibody: ml222443 (MB Antibody) at dilution 1/400

Secondary antibody: Goat anti rabbit IgG at 1/8000 dilution

Exposure time: 1 second



### ELISA

Recommended dilution: 5000-10000

联系电话: 4008-898-798, 021-61725725

联系QQ: 2881505695, 2881505696

邮箱: [mlbio\\_cn@yeah.net](mailto:mlbio_cn@yeah.net)

网址: [www.mlbio.cn](http://www.mlbio.cn)