

Anti-MAP4K3 antibody

Cat. No.	ml221308
Package	25 µl/100 µl/200 µl
Storage	-20°C, pH7.4 PBS, 0.05% NaN ₃ , 40% Glycerol

Product overview

Description	Anti-MAP4K3 rabbit polyclonal antibody
Applications	ELISA, WB, IHC
Immunogen	Fusion protein of human MAP4K3
Reactivity	Human, Mouse, Rat
Content	0.2 mg/ml
Host species	Rabbit
Ig class	Immunogen-specific rabbit IgG
Purification	Antigen affinity purification

Target information

Symbol	MAP4K3
Full name	Mitogen-activated protein kinase kinase kinase kinase 3

Synonyms GLK; MEKKK3; MEKKK 3; MAPKKKK3; RAB8IPL1

Swissprot Q8IVH8

Target Background

This gene encodes a member of the mitogen-activated protein kinase kinase kinase family. The encoded protein activates key effectors in cell signalling, among them c-Jun. Alternatively spliced transcripts encoding multiple isoforms have been observed for this gene. May play a role in the response to environmental stress. Appears to act upstream of the JUN N-terminal pathway. Ubiquitously expressed in all tissues examined, with high levels in heart, brain, placenta, skeletal muscle, kidney and pancreas and lower levels in lung and liver.

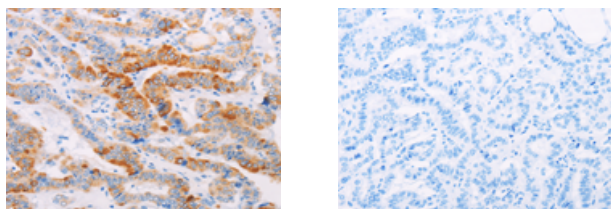
Applications

Immunohistochemistry

Predicted cell location: Cytoplasm

Positive control: Human thyroid cancer

Recommended dilution: 25-100



The image on the left is immunohistochemistry of paraffin-embedded Human thyroid cancer tissue using ml221308(MAP4K3 Antibody) at dilution 1/30, on the right is treated with fusion protein. (Original magnification: $\times 200$)

Western blotting

Predicted band size: 101 kDa

Positive control: Mouse heart tissue

Recommended dilution: 500-2000

Gel: 10%SDS-PAGE

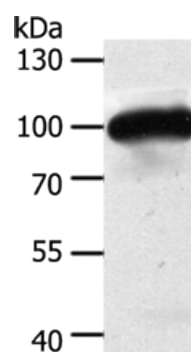
Lysate: 50 μ g

Lane: Mouse heart tissue

Primary antibody: ml221308(MAP4K3 Antibody) at dilution 1/400

Secondary antibody: Goat anti rabbit IgG at 1/8000 dilution

Exposure time: 10 seconds



ELISA

Recommended dilution: 2000-5000

联系电话: 4008-898-798, 021-61725725

联系QQ: 2881505695, 2881505696

邮箱: mlbio_cn@yeah.net

网址: www.mlbio.cn