

Anti-TPM1 antibody

Cat. No.	ml221373
Package	25 µl/100 µl/200 µl
Storage	-20°C, pH7.4 PBS, 0.05% NaN ₃ , 40% Glycerol

Product overview

Description	Anti-TPM1 rabbit polyclonal antibody
Applications	ELISA, WB, IHC
Immunogen	Fusion protein of human TPM1
Reactivity	Human, Mouse, Rat
Content	0.2 mg/ml
Host species	Rabbit
Ig class	Immunogen-specific rabbit IgG
Purification	Antigen affinity purification

Target information

Symbol	TPM1
Full name	Tropomyosin 1 (alpha)

Synonyms CMH3; TMSA; CMD1Y; C15orf13; HTM-alpha

Swissprot P09493

Target Background

This gene is a member of the tropomyosin family of highly conserved, widely distributed actin-binding proteins involved in the contractile system of striated and smooth muscles and the cytoskeleton of non-muscle cells. Tropomyosin is composed of two alpha-helical chains arranged as a coiled-coil. It is polymerized end to end along the two grooves of actin filaments and provides stability to the filaments. The encoded protein is one type of alpha helical chain that forms the predominant tropomyosin of striated muscle, where it also functions in association with the troponin complex to regulate the calcium-dependent interaction of actin and myosin during muscle contraction. In smooth muscle and non-muscle cells, alternatively spliced transcript variants encoding a range of isoforms have been described. Mutations in this gene are associated with type 3 familial hypertrophic cardiomyopathy.

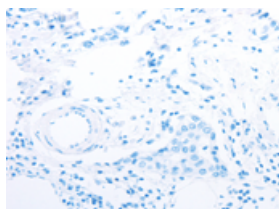
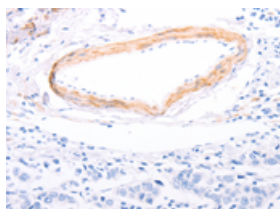
Applications

Immunohistochemistry

Predicted cell location: Cytoplasm, cytoskeleton

Positive control: Human breast cancer

Recommended dilution: 50-200

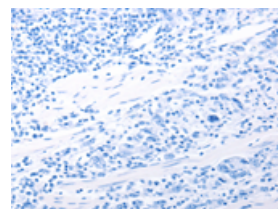
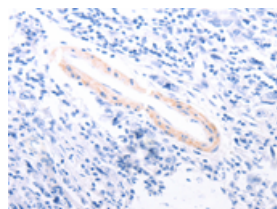


The image on the left is immunohistochemistry of paraffin-embedded Human breast cancer tissue using ml221373(TPM1 Antibody) at dilution 1/80, on the right is treated with fusion protein. (Original magnification: ×200)

Predicted cell location: Cytoplasm, cytoskeleton

Positive control: Human gastric cancer

Recommended dilution: 50-200



The image on the left is immunohistochemistry of paraffin-embedded Human gastric cancer tissue using ml221373(TPM1 Antibody) at dilution 1/80, on the right is treated with fusion protein. (Original magnification: ×200)

Western blotting

Predicted band size: 33 kDa

Positive control: Mouse heart tissue

Recommended dilution: 1000-5000

Gel: 12%SDS-PAGE

Lysate: 50 µg

Lane: Mouse heart tissue

Primary antibody: ml221373(TPM1 Antibody) at dilution 1/1000

Secondary antibody: Goat anti rabbit IgG at 1/8000 dilution

Exposure time: 1 minute



ELISA

Recommended dilution: 2000-10000

联系电话: 4008-898-798, 021-61725725

联系QQ: 2881505695, 2881505696

邮箱: mlbio_cn@yeah.net

网址: www.mlbio.cn