

Anti-IL22RA2 antibody

Cat. No.	ml222540
Package	25 µl/100 µl/200 µl
Storage	-20°C, pH7.4 PBS, 0.05% NaN ₃ , 40% Glycerol

Product overview

Description	Anti-IL22RA2 rabbit polyclonal antibody
Applications	ELISA, WB
Immunogen	Fusion protein of human IL22RA2
Reactivity	Human
Content	0.1 mg/ml
Host species	Rabbit
Ig class	Immunogen-specific rabbit IgG
Purification	Antigen affinity purification

Target information

Symbol	IL22RA2
Full name	interleukin 22 receptor, alpha 2
Synonyms	CRF2X; CRF2-10; CRF2-S1; IL-22BP; IL-22RA2; ZCYTOR16; IL-22R-alpha-2
Swissprot	Q969J5

Target Background

This gene encodes a member of the class II cytokine receptor family. The encoded soluble protein specifically binds to and inhibits interleukin 22 activity by blocking the interaction of interleukin 22 with its cell surface receptor. The encoded protein may be important in the regulation of inflammatory response, and has been implicated in the regulation of tumorigenesis in the colon. Alternative splicing results in multiple transcript variants encoding distinct isoforms.

订购热线: 4008-898-798

Applications

Western blotting

Predicted band size: 31 kDa

Positive control: SP20, Raji and 231 cells

Recommended dilution: 200-1000

Gel: 10% SDS-PAGE

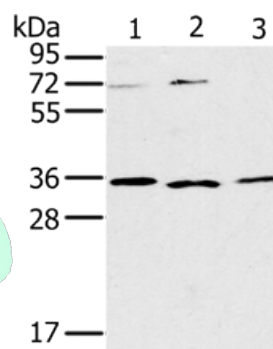
Lysate: 40 µg

Lane 1-3: SP20 cells, Raji cells, 231 cells

Primary antibody: ml222540(IL22RA2 Antibody) at dilution 1/200

Secondary antibody: Goat anti rabbit IgG at 1/8000 dilution

Exposure time: 10 minutes



ELISA

Recommended dilution: 1000-2000

联系电话: 4008-898-798, 021-61725725

联系QQ: 2881505695, 2881505696

邮箱: mlbio_cn@yeah.net

网址: www.mlbio.cn