

## Anti-TMEM67 antibody

<b>Cat. No.</b>	ml221425
<b>Package</b>	25 µl/100 µl/200 µl
<b>Storage</b>	-20°C, pH7.4 PBS, 0.05% NaN <sub>3</sub> , 40% Glycerol

### Product overview

<b>Description</b>	Anti-TMEM67 rabbit polyclonal antibody
<b>Applications</b>	ELISA, WB, IHC
<b>Immunogen</b>	Fusion protein of human TMEM67
<b>Reactivity</b>	Human, Mouse, Rat
<b>Content</b>	0.1 mg/ml
<b>Host species</b>	Rabbit
<b>Ig class</b>	Immunogen-specific rabbit IgG
<b>Purification</b>	Antigen affinity purification

### Target information

<b>Symbol</b>	TMEM67
<b>Full name</b>	transmembrane protein 67

**Synonyms** MKS3; JBTS6; NPHP11; TNEM67; MECKELIN

**Swissprot** Q5HYA8

#### **Target Background**

The protein encoded by this gene localizes to the primary cilium and to the plasma membrane. The gene functions in centriole migration to the apical membrane and formation of the primary cilium. Multiple transcript variants encoding different isoforms have been found for this gene. Defects in this gene are a cause of Meckel syndrome type 3 (MKS3) and Joubert syndrome type 6 (JBTS6).

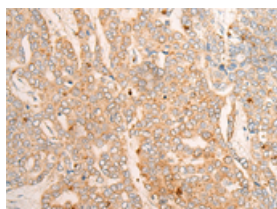
## Applications

### Immunohistochemistry

Predicted cell location: Cytoplasm and Cell membrane

Positive control: Human liver cancer

Recommended dilution: 20-100

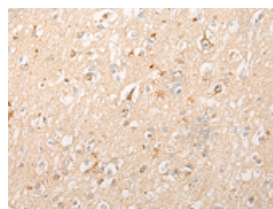


The image is immunohistochemistry of paraffin-embedded Human liver cancer tissue using ml221425(TMEM67 Antibody) at dilution 1/20. (Original magnification: ×200)

Predicted cell location: Cytoplasm and Cell membrane

Positive control: Human brain

Recommended dilution: 20-100



The image is immunohistochemistry of paraffin-embedded Human brain tissue using ml221425(TMEM67 Antibody) at dilution 1/20. (Original magnification: ×200)

### Western blotting

Predicted band size: 112 kDa

Positive control: Human kidney tissue and A549 cell lysates

Recommended dilution: 200-1000

Gel: 6%SDS-PAGE

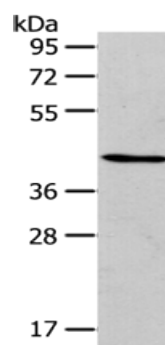
Lysate: 40 μg

Lane 1-2: Human kidney tissue and A549 cell lysates

Primary antibody: ml221425(TMEM67 Antibody) at dilution 1/200

Secondary antibody: Goat anti rabbit IgG at 1/8000 dilution

Exposure time: 10 minutes



**mlbio** 酶联生物  
Good elisakit producers  
订购热线: 4008-898-798

**ELISA**

Recommended dilution: 5000-10000

联系电话: 4008-898-798, 021-61725725

联系QQ: 2881505695, 2881505696

邮箱: [mlbio\\_cn@yeah.net](mailto:mlbio_cn@yeah.net)

网址: [www.mlbio.cn](http://www.mlbio.cn)