

Anti-ITLN1 antibody

Cat. No.	ml222558
Package	25 µl/100 µl/200 µl
Storage	-20°C, pH7.4 PBS, 0.05% NaN ₃ , 40% Glycerol

Product overview

Description	Anti-ITLN1 rabbit polyclonal antibody
Applications	ELISA, WB
Immunogen	Fusion protein of human ITLN1
Reactivity	Human, Mouse
Content	0.2 mg/ml
Host species	Rabbit
Ig class	Immunogen-specific rabbit IgG
Purification	Antigen affinity purification

Target information

Symbol	ITLN1
Full name	intelectin 1 (galactofuranose binding)
Synonyms	HL1; LFR; HL-1; INTL; ITLN; hIntL; omentin
Swissprot	Q8WWA0

Target Background

Intelectin-1 also known as the intestinal lactoferrin receptor is a protein that in humans is encoded by the ITLN1 gene. Intelectin-1 functions both as a receptor for bacterial arabinogalactans and for lactoferrin. Has no effect on basal glucose uptake but enhances insulin-stimulated glucose uptake in adipocytes. Increases AKT phosphorylation in the absence and presence of insulin. May play a role in the defense system against microorganisms. May specifically recognize carbohydrate chains of pathogens and bacterial components containing galactofuranosyl residues, in a calcium-dependent manner.

订购热线: 4008-898-798

Applications

Western blotting

Predicted band size: 35 kDa

Positive control: Human fetal intestine tissue

Recommended dilution: 1000-5000

Gel: 10% SDS-PAGE

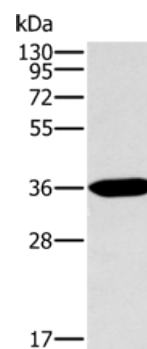
Lysate: 40 µg

Lane: Human fetal intestine tissue

Primary antibody: ml222558 (ITLN1 Antibody) at dilution 1/400

Secondary antibody: Goat anti rabbit IgG at 1/8000 dilution

Exposure time: 2 minutes



ELISA

Recommended dilution: 2000-10000

联系电话: 4008-898-798, 021-61725725

联系QQ: 2881505695, 2881505696

邮箱: mlbio_cn@yeah.net

网址: www.mlbio.cn