

Anti-HENMT1 antibody

Cat. No.	ml224933
Package	25 µl/100 µl/200 µl
Storage	-20°C, pH7.4 PBS, 0.05% NaN ₃ , 40% Glycerol

Product overview

Description	Anti-HENMT1 rabbit polyclonal antibody
Applications	ELISA, WB, IHC
Immunogen	Fusion protein of human HENMT1
Reactivity	Human
Content	0.54 mg/ml
Host species	Rabbit
Ig class	Immunogen-specific rabbit IgG
Purification	Antigen affinity purification

Target information

Symbol	HENMT1
Full name	HEN1 methyltransferase homolog 1

Synonyms HEN1; C1orf59

Swissprot Q5T8I9

Target Background

Methyltransferase that adds a 2'-O-methyl group at the 3'-end of piRNAs, a class of 24 to 30 nucleotide RNAs that are generated by a Dicer-independent mechanism and are primarily derived from transposons and other repeated sequence elements. This probably protects the 3'-end of piRNAs from uridylation activity and subsequent degradation. Stabilization of piRNAs is essential for gametogenesis.

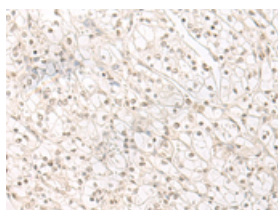
Applications

Immunohistochemistry

Predicted cell location: Nucleus

Positive control: Human kidney cancer

Recommended dilution: 30-150

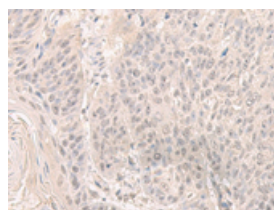


The image on the left is immunohistochemistry of paraffin-embedded Human kidney cancer tissue using ml224933(HENMT1 Antibody) at dilution 1/30, on the right is treated with fusion protein. (Original magnification: $\times 200$)

Predicted cell location: Nucleus

Positive control: Human esophagus cancer

Recommended dilution: 30-150



The image on the left is immunohistochemistry of paraffin-embedded Human esophagus cancer tissue using ml224933(HENMT1 Antibody) at dilution 1/30, on the right is treated with fusion protein. (Original magnification: $\times 200$)

Western blotting

Predicted band size: 45 kDa

Positive control: HEPG2 cell lysate

Recommended dilution: 500-2000

Gel: 8%SDS-PAGE

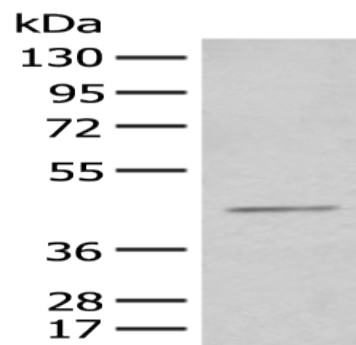
Lysate: 40 μ g

Lane: HEPG2 cell lysate

Primary antibody: ml224933(HENMT1 Antibody) at dilution 1/500

Secondary antibody: Goat anti rabbit IgG at 1/8000 dilution

Exposure time: 1 minute



ELISA

Recommended dilution: 5000-10000

联系电话: 4008-898-798, 021-61725725

联系QQ: 2881505695, 2881505696

邮箱: mlbio_cn@yeah.net

网址: www.mlbio.cn