

Anti-JUP antibody

Cat. No.	ml222567
Package	25 µl/100 µl/200 µl
Storage	-20°C, pH7.4 PBS, 0.05% NaN ₃ , 40% Glycerol

Product overview

Description	Anti-JUP rabbit polyclonal antibody
Applications	ELISA, WB, IHC
Immunogen	Fusion protein of human JUP
Reactivity	Human, Mouse, Rat
Content	0.2 mg/ml
Host species	Rabbit
Ig class	Immunogen-specific rabbit IgG
Purification	Antigen affinity purification

Target information

Symbol	JUP
Full name	junction plakoglobin

Synonyms DP3; PDGB; PKGB; CTNNG; DPIII; ARVD12

Swissprot P14923

Target Background

This gene encodes a major cytoplasmic protein which is the only known constituent common to submembranous plaques of both desmosomes and intermediate junctions. This protein forms distinct complexes with cadherins and desmosomal cadherins and is a member of the catenin family since it contains a distinct repeating amino acid motif called the armadillo repeat. Mutation in this gene has been associated with Naxos disease. Alternative splicing occurs in this gene; however, not all transcripts have been fully described.

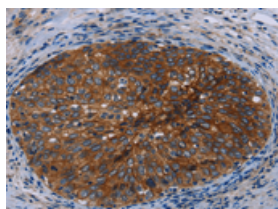
Applications

Immunohistochemistry

Predicted cell location: Cytoplasm

Positive control: Human cervical cancer

Recommended dilution: 50-200

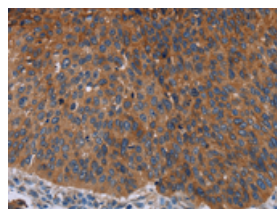


The image on the left is immunohistochemistry of paraffin-embedded Human cervical cancer tissue using ml222567(JUP Antibody) at dilution 1/50, on the right is treated with fusion protein. (Original magnification: $\times 200$)

Predicted cell location: Cytoplasm

Positive control: Human lung cancer

Recommended dilution: 50-200



The image on the left is immunohistochemistry of paraffin-embedded Human lung cancer tissue using ml222567(JUP Antibody) at dilution 1/50, on the right is treated with fusion protein. (Original magnification: $\times 200$)

Western blotting

Predicted band size: 82 kDa

Positive control: Mouse heart tissue and Hela cells, HUVEC cells and mouse skin tissue

Recommended dilution: 1000-5000

Gel: 6%SDS-PAGE

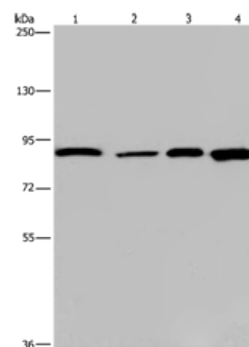
Lysate: 40 µg

Lane 1-4: Mouse heart tissue, Hela cells, HUVEC cells, mouse skin tissue

Primary antibody: ml222567(JUP Antibody) at dilution 1/1150

Secondary antibody: Goat anti rabbit IgG at 1/8000 dilution

Exposure time: 10 seconds



ELISA

Recommended dilution: 2000-10000

联系电话: 4008-898-798, 021-61725725

联系QQ: 2881505695, 2881505696

邮箱: mlbio_cn@yeah.net

网址: www.mlbio.cn