

Anti-KIF1C antibody

Cat. No.	ml222582
Package	25 µl/100 µl/200 µl
Storage	-20°C, pH7.4 PBS, 0.05% NaN ₃ , 40% Glycerol

Product overview

Description	Anti-KIF1C rabbit polyclonal antibody
Applications	ELISA, WB, IHC
Immunogen	Fusion protein of human KIF1C
Reactivity	Human, Mouse, Rat
Content	0.5 mg/ml
Host species	Rabbit
Ig class	Immunogen-specific rabbit IgG
Purification	Antigen affinity purification

Target information

Symbol	KIF1C
Full name	kinesin family member 1C

Synonyms SAX2; LTXS1; SATX2; SPAX2; SPG58

Swissprot O43896

Target Background

The kinesins constitute a large family of microtubule-dependent motor proteins, which are responsible for the distribution of numerous organelles, vesicles and macromolecular complexes throughout the cell . Individual kinesin members play crucial roles in cell division, intracellular transport, and membrane trafficking events including endocytosis and transcytosis . KIF1C is a member of the KIF1/Unc104 family of kinesin-like proteins, which are involved in the transport of mitochondria or synaptic vesicles in axons . Human KIF1C maps to chromosome 17p13 and encodes a predicted 1,103 amino acid protein with abundant expression in heart and skeletal muscle . Tyrosine phosphorylation is a putative regulator of KIF1C mediated retrograde transport of Golgi vesicles to the endoplasmic reticulum. KIF1C is capable of forming homodimers and can noncovalently associate with 14-3-3 beta, gamma, epsilon and zeta . In mouse macrophages, KIF1C is required for anthrax lethal toxin resistance.

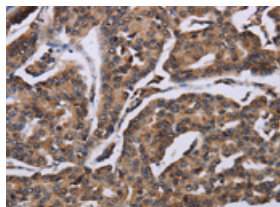
Applications

Immunohistochemistry

Predicted cell location: Cytoplasm

Positive control: Human breast cancer

Recommended dilution: 50-200

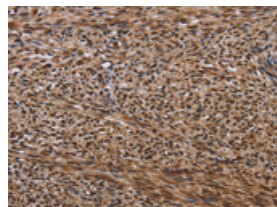


The image on the left is immunohistochemistry of paraffin-embedded Human breast cancer tissue using ml222582(KIF1C Antibody) at dilution 1/60, on the right is treated with fusion protein. (Original magnification: $\times 200$)

Predicted cell location: Cytoplasm

Positive control: Human sarcoma

Recommended dilution: 50-200



The image on the left is immunohistochemistry of paraffin-embedded Human sarcoma tissue using ml222582(KIF1C Antibody) at dilution 1/60, on the right is treated with fusion protein. (Original magnification: $\times 200$)

Western blotting

Predicted band size: 123 kDa

Positive control: A549 cells

Recommended dilution: 200-1000

Gel: 6%SDS-PAGE

Lysate: 40 μ g

Lane: A549 cells

Primary antibody: ml222582(KIF1C Antibody) at dilution 1/200

Secondary antibody: Goat anti rabbit IgG at 1/8000 dilution

Exposure time: 20 seconds



ELISA

Recommended dilution: 1000-2000

联系电话: 4008-898-798, 021-61725725

联系QQ: 2881505695, 2881505696

邮箱: mlbio_cn@yeah.net

网址: www.mlbio.cn