

## Anti-KIF20A antibody

<b>Cat. No.</b>	ml222587
<b>Package</b>	25 µl/100 µl/200 µl
<b>Storage</b>	-20°C, pH7.4 PBS, 0.05% NaN <sub>3</sub> , 40% Glycerol

### Product overview

<b>Description</b>	Anti-KIF20A rabbit polyclonal antibody
<b>Applications</b>	ELISA, WB, IHC
<b>Immunogen</b>	Fusion protein of human KIF20A
<b>Reactivity</b>	Human, Mouse
<b>Content</b>	0.2 mg/ml
<b>Host species</b>	Rabbit
<b>Ig class</b>	Immunogen-specific rabbit IgG
<b>Purification</b>	Antigen affinity purification

### Target information

<b>Symbol</b>	KIF20A
<b>Full name</b>	kinesin family member 20A

**Synonyms** MKLP2; RAB6KIFL

**Swissprot** O95235

#### **Target Background**

KIF20A (kinesin family member 20A), also known as Rabkinesin-6, RAB6KIFL (Rab6-interacting kinesin-like protein), GG10\_2 or MKLP2 (mitotic kinesin-like protein 2), is a 890 amino acid protein that contains one kinesin-motor domain and belongs to the Kinesin-like protein family. KIF20A locates to the Golgi apparatus and interacts with guanosine triphosphate (GTP)-bound forms of RAB 6. KIF20A may be responsible for the retrograde RAB 6 regulated transport of Golgi membranes and related vesicles along microtubules.

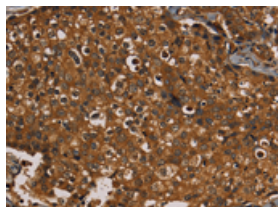
## Applications

### Immunohistochemistry

Predicted cell location: Cytoplasm or Nucleus

Positive control: Human breast cancer

Recommended dilution: 50-200

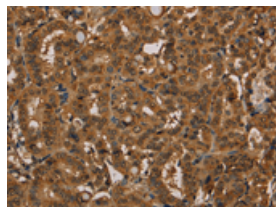


The image on the left is immunohistochemistry of paraffin-embedded Human breast cancer tissue using ml222587(KIF20A Antibody) at dilution 1/20, on the right is treated with fusion protein. (Original magnification:  $\times 200$ )

Predicted cell location: Cytoplasm or Nucleus

Positive control: Human thyroid cancer

Recommended dilution: 50-200



The image on the left is immunohistochemistry of paraffin-embedded Human thyroid cancer tissue using ml222587(KIF20A Antibody) at dilution 1/20, on the right is treated with fusion protein. (Original magnification:  $\times 200$ )

### Western blotting

Predicted band size: 100 kDa

Positive control: K562, 293T and hela cells

Recommended dilution: 200-1000

Gel: 6%SDS-PAGE

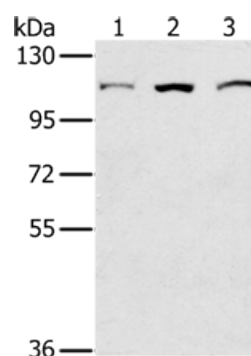
Lysate: 40 µg

Lane 1-3: K562 cells, 293T cells, hela cells

Primary antibody: ml222587(KIF20A Antibody) at dilution 1/400

Secondary antibody: Goat anti rabbit IgG at 1/8000 dilution

Exposure time: 10 seconds



## ELISA

Recommended dilution: 1000-2000

联系电话: 4008-898-798, 021-61725725

联系QQ: 2881505695, 2881505696

邮箱: [mlbio\\_cn@yeah.net](mailto:mlbio_cn@yeah.net)

网址: [www.mlbio.cn](http://www.mlbio.cn)