

Anti-FGFR1OP2 antibody

Cat. No.	ml122366
Package	25 µl/100 µl/200 µl
Storage	-20°C, pH7.4 PBS, 0.05% NaN ₃ , 40% Glycerol

Product overview

Description	Anti-FGFR1OP2 rabbit polyclonal antibody
Applications	ELISA, IHC
Immunogen	Fusion protein of human FGFR1OP2
Reactivity	Human, Mouse, Rat
Content	0.7 mg/ml
Host species	Rabbit
Ig class	Immunogen-specific rabbit IgG
Purification	Antigen affinity purification

Target information

Symbol	FGFR1OP2
Full name	FGFR1 oncogene partner 2
Synonyms	WIT3.0; HSPC123-like
Swissprot	Q9NVK5

Target Background

Acidic and basic fibroblast growth factors (FGFs) are members of a family of multifunctional polypeptide growth factors that stimulate proliferation of cells of mesenchymal, epithelial and neuroectodermal origin. Like other growth factors, FGFs act by binding and activating specific cell surface receptors which include the Flg receptor (FGFR-1) and the Bek receptor (FGFR-2), as well as FGFR-3, FGFR-4, FGFR-5 and FGFR-6. FGFR1OP2 (FGFR1 oncogene partner 2), also known as HSPC123, is a 253 amino acid cytoplasmic protein that is expressed in spleen, thymus and bone marrow and is involved in wound healing under normal cellular conditions. Additionally, FGFR1OP2 may also exist as an aberrant fusion protein with Flg and it is thought that the FGFR1OP2-Flg mutant may play a role in the pathogenesis of stem cell myeloproliferative disorder (MPD). Multiple isoforms of FGFR1OP2 exist due to alternative splicing events.

订购热线: 4008-898-798

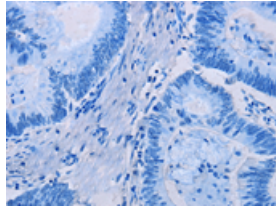
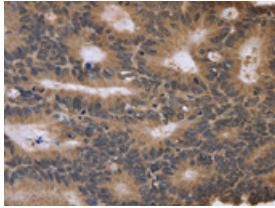
Applications

Immunohistochemistry

Predicted cell location: Cytoplasm

Positive control: Human colon cancer

Recommended dilution: 50-200



The image on the left is immunohistochemistry of paraffin-embedded Human colon cancer tissue using ml122366(FGFR1OP2 Antibody) at dilution 1/40, on the right is treated with fusion protein. (Original magnification: $\times 200$)

ELISA

Recommended dilution: 2000-5000

联系电话: 4008-898-798, 021-61725725

联系QQ: 2881505695, 2881505696

邮箱: mlbio_cn@yeah.net

网址: www.mlbio.cn