

## Anti-SETD7 antibody

<b>Cat. No.</b>	ml122485
<b>Package</b>	25 µl/100 µl/200 µl
<b>Storage</b>	-20°C, pH7.4 PBS, 0.05% NaN <sub>3</sub> , 40% Glycerol

### Product overview

<b>Description</b>	Anti-SETD7 rabbit polyclonal antibody
<b>Applications</b>	ELISA, IHC
<b>Immunogen</b>	Fusion protein of human SETD7
<b>Reactivity</b>	Human, Mouse
<b>Content</b>	0.2 mg/ml
<b>Host species</b>	Rabbit
<b>Ig class</b>	Immunogen-specific rabbit IgG
<b>Purification</b>	Antigen affinity purification

### Target information

<b>Symbol</b>	SETD7
<b>Full name</b>	SET domain containing (lysine methyltransferase) 7
<b>Synonyms</b>	KMT7; SET7; SET9; SET7/9
<b>Swissprot</b>	Q8WTS6

### Target Background

The methylation of histones plays a pivotal role in the regulation of chromatin structure and gene expression. Histone methylation can occur on Arg or Lys residues, with an exquisite site selectivity for Lys methylation at specific positions in the N-termini of histones H3 and H4. SET7/9, a histone methyltransferase (HMTase), which transfers methyl groups to Lys4 of histone H3, forms a complex with S-adenosyl-L-methionine. This complex contains an active site consisting of a binding pocket where an AdoMet molecule in an unusual conformation binds, a narrow substrate-specific channel that only unmethylated lysine residues can access and a catalytic tyrosine residue.

订购热线: 4008-898-798

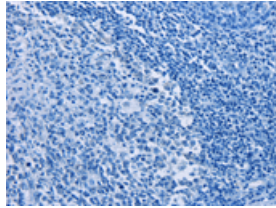
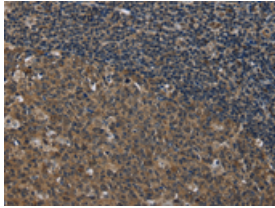
#### Applications

##### Immunohistochemistry

Predicted cell location: Nucleus and Cytoplasm

Positive control: Human tonsil

Recommended dilution: 50-200

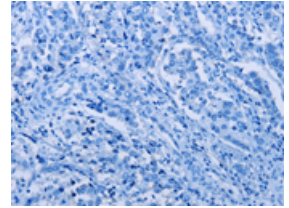
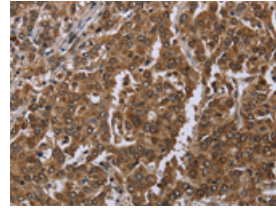


The image on the left is immunohistochemistry of paraffin-embedded Human tonsil tissue using ml122485(SETD7 Antibody) at dilution 1/20, on the right is treated with fusion protein. (Original magnification:  $\times 200$ )

Predicted cell location: Nucleus and Cytoplasm

Positive control: Human liver cancer

Recommended dilution: 50-200



The image on the left is immunohistochemistry of paraffin-embedded Human liver cancer tissue using ml122485(SETD7 Antibody) at dilution 1/20, on the right is treated with fusion protein. (Original magnification:  $\times 200$ )

##### ELISA

Recommended dilution: 2000-5000

联系电话: 4008-898-798, 021-61725725

联系QQ: 2881505695, 2881505696

邮箱: [mlbio\\_cn@yeah.net](mailto:mlbio_cn@yeah.net)

网址: [www.mlbio.cn](http://www.mlbio.cn)