

Anti-CCDC47 antibody

Cat. No.	ml225084
Package	25 µl/100 µl/200 µl
Storage	-20°C, pH7.4 PBS, 0.05% NaN ₃ , 40% Glycerol

Product overview

Description	Anti-CCDC47 rabbit polyclonal antibody
Applications	ELISA, WB, IHC
Immunogen	Fusion protein of human CCDC47
Reactivity	Human, Mouse, Rat
Content	0.84 mg/ml
Host species	Rabbit
Ig class	Immunogen-specific rabbit IgG
Purification	Antigen affinity purification

Target information

Symbol	CCDC47
Full name	coiled-coil domain containing 47

Synonyms GK001; MSTP041

Swissprot Q96A33

Target Background

The coiled-coil domain is a common protein motif that is often involved in protein oligomerization and is found in proteins such as transcription factors and intermediate filaments. The CCDC47 gene maps to chromosome 17 at 17q23.3. Little is known about this single-pass membrane protein except that the coiled-coil domain is within the cytosolic domain near the carboxy terminus.

Applications

Immunohistochemistry

Predicted cell location: Cytoplasm

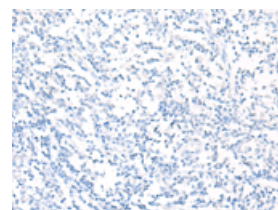
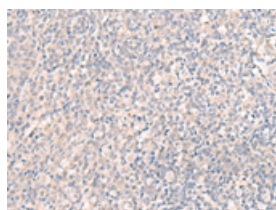
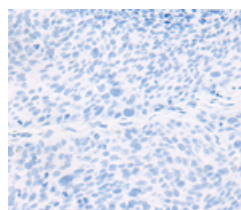
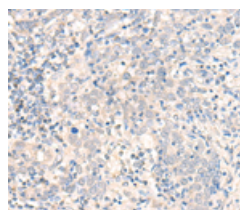
Predicted cell location: Cytoplasm

Positive control: Human cervical cancer

Positive control: Human tonsil

Recommended dilution: 30-150

Recommended dilution: 30-150



The image on the left is immunohistochemistry of paraffin-embedded Human cervical cancer tissue using ml225084(CCDC47 Antibody) at dilution 1/25, on the right is treated with fusion protein. (Original magnification: $\times 200$)

The image on the left is immunohistochemistry of paraffin-embedded Human tonsil tissue using ml225084(CCDC47 Antibody) at dilution 1/25, on the right is treated with fusion protein. (Original magnification: $\times 200$)

Western blotting

Predicted band size: 56 kDa

Positive control: Mouse heart tissue, Mouse liver tissue, NIH/3T3 cell, Human bladder transitional cell carcinoma grade 2-3 tissue, A172 cell, Human placenta tissue, K562 cell lysates

Recommended dilution: 500-2000

Gel: 8%SDS-PAGE

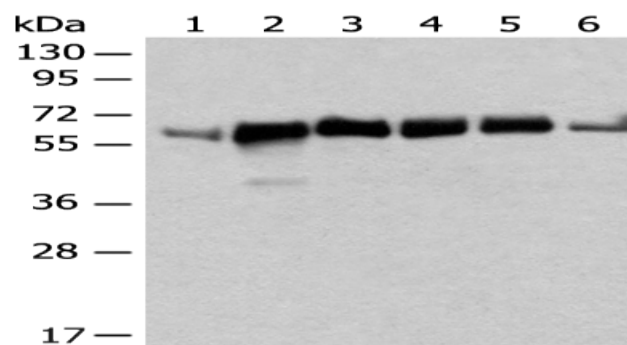
Lysate: 40 µg

Lane 1-7: Mouse heart tissue, Mouse liver tissue, NIH/3T3 cell,
Human bladder transitional cell carcinoma grade 2-3 tissue, A172
cell, Human placenta tissue, K562 cell lysates

Primary antibody: ml225084(CCDC47 Antibody) at dilution 1/350

Secondary antibody: Goat anti rabbit IgG at 1/8000 dilution

Exposure time: 5 seconds



ELISA

Recommended dilution: 5000-10000

联系电话: 4008-898-798, 021-61725725

联系QQ: 2881505695, 2881505696

邮箱: mlbio_cn@yeah.net

网址: www.mlbio.cn