

## Anti-ZGPAT antibody

<b>Cat. No.</b>	ml225092
<b>Package</b>	25 µl/100 µl/200 µl
<b>Storage</b>	-20°C, pH7.4 PBS, 0.05% NaN <sub>3</sub> , 40% Glycerol

### Product overview

<b>Description</b>	Anti-ZGPAT rabbit polyclonal antibody
<b>Applications</b>	ELISA, WB, IHC
<b>Immunogen</b>	Fusion protein of human ZGPAT
<b>Reactivity</b>	Human
<b>Content</b>	0.96 mg/ml
<b>Host species</b>	Rabbit
<b>Ig class</b>	Immunogen-specific rabbit IgG
<b>Purification</b>	Antigen affinity purification

### Target information

<b>Symbol</b>	ZGPAT
<b>Full name</b>	zinc finger CCCH-type and G-patch domain containing

**Synonyms** ZIP; ZC3H9; GPATC6; GPATCH6; ZC3HDC9; KIAA1847

**Swissprot** Q8N5A5

#### **Target Background**

Transcription repressor that specifically binds the 5'-GGAG[GA]A[GA]A-3' consensus sequence. Represses transcription by recruiting the chromatin multiprotein complex NuRD to target promoters. Negatively regulates expression of EGFR, a gene involved in cell proliferation, survival and migration. Its ability to repress genes of the EGFR pathway suggest it may act as a tumor suppressor. Able to suppress breast carcinogenesis.

## Applications

### Immunohistochemistry

Predicted cell location: Nucleus

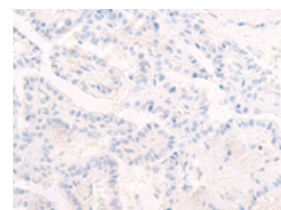
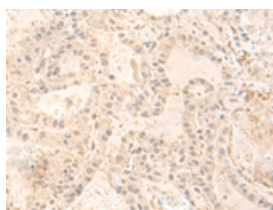
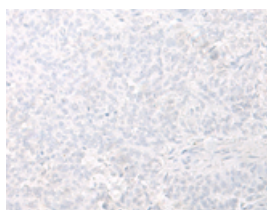
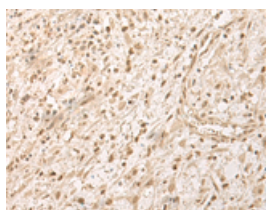
Predicted cell location: Nucleus

Positive control: Human ovarian cancer

Positive control: Human thyroid cancer

Recommended dilution: 50-300

Recommended dilution: 50-300



The image on the left is immunohistochemistry of paraffin-embedded Human ovarian cancer tissue using ml225092(ZGPAT Antibody) at dilution 1/55, on the right is treated with fusion protein. (Original magnification:  $\times 200$ )

The image on the left is immunohistochemistry of paraffin-embedded Human thyroid cancer tissue using ml225092(ZGPAT Antibody) at dilution 1/55, on the right is treated with fusion protein. (Original magnification:  $\times 200$ )

### Western blotting

Predicted band size: 57 kDa

Positive control: Human fetal liver tissue, LO2 cell, PC-3 cell, HEPG2 cell lysates

Recommended dilution: 200-1000

Gel: 8%SDS-PAGE

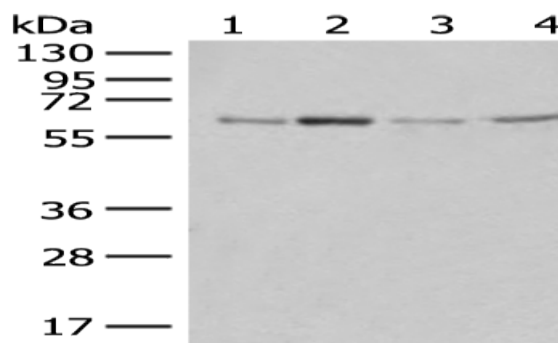
Lysate: 40 µg

Lane 1-4: Human fetal liver tissue, LO2 cell, PC-3 cell, HEPG2 cell lysates

Primary antibody: ml225092(ZGPAT Antibody) at dilution 1/400

Secondary antibody: Goat anti rabbit IgG at 1/8000 dilution

Exposure time: 2 minutes



#### ELISA

Recommended dilution: 5000-10000

联系电话: 4008-898-798, 021-61725725

联系QQ: 2881505695, 2881505696

邮箱: [mlbio\\_cn@yeah.net](mailto:mlbio_cn@yeah.net)

网址: [www.mlbio.cn](http://www.mlbio.cn)