

## Anti-M1AP antibody

<b>Cat. No.</b>	ml225102
<b>Package</b>	25 µl/100 µl/200 µl
<b>Storage</b>	-20°C, pH7.4 PBS, 0.05% NaN <sub>3</sub> , 40% Glycerol

### Product overview

<b>Description</b>	Anti-M1AP rabbit polyclonal antibody
<b>Applications</b>	ELISA, WB, IHC
<b>Immunogen</b>	Fusion protein of human M1AP
<b>Reactivity</b>	Human
<b>Content</b>	0.6 mg/ml
<b>Host species</b>	Rabbit
<b>Ig class</b>	Immunogen-specific rabbit IgG
<b>Purification</b>	Antigen affinity purification

### Target information

<b>Symbol</b>	M1AP
<b>Full name</b>	meiosis 1 associated protein

**Synonyms** D6Mm5e; C2orf65; SPATA37

**Swissprot** Q8TC57

#### Target Background

This gene encodes a protein that is likely to function in progression of meiosis. A similar protein in mouse plays a role in gametogenesis in both sexes. Alternate splicing results in multiple transcript variants encoding different isoforms.

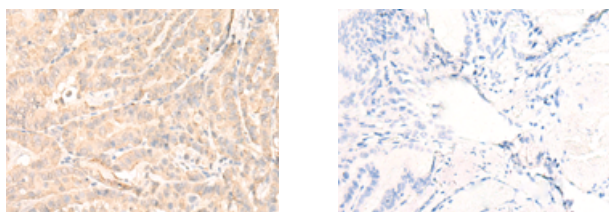
## Applications

### Immunohistochemistry

Predicted cell location: Cytoplasm

Positive control: Human thyroid cancer

Recommended dilution: 30-150



The image on the left is immunohistochemistry of paraffin-embedded Human thyroid cancer tissue using ml225102(M1AP Antibody) at dilution 1/20, on the right is treated with fusion protein. (Original magnification: ×200)

### Western blotting

Predicted band size: 59 kDa

Positive control: Jurkat cell lysate

Recommended dilution: 200-1000

Gel: 8%SDS-PAGE

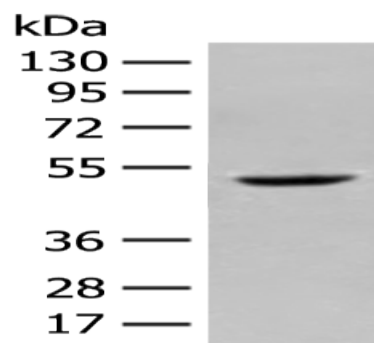
Lysate: 40  $\mu$ g

Lane: Jurkat cell lysate

Primary antibody: ml225102(M1AP Antibody) at dilution 1/250

Secondary antibody: Goat anti rabbit IgG at 1/8000 dilution

Exposure time: 30 seconds



#### ELISA

Recommended dilution: 5000-10000

联系电话: 4008-898-798, 021-61725725

联系QQ: 2881505695, 2881505696

邮箱: [mlbio\\_cn@yeah.net](mailto:mlbio_cn@yeah.net)

网址: [www.mlbio.cn](http://www.mlbio.cn)