

## Anti-WDR1 antibody

|                 |   |
|-----------------|---|
| <b>Cat. No.</b> | ml225121  |
| <b>Package</b>  | 25 µl/100 µl/200 µl                                     |
| <b>Storage</b>  | -20°C, pH7.4 PBS, 0.05% NaN <sub>3</sub> , 40% Glycerol |

### Product overview

|                     |                                      |
|---------------------|--------------------------------------|
| <b>Description</b>  | Anti-WDR1 rabbit polyclonal antibody |
| <b>Applications</b> | ELISA, WB, IHC                       |
| <b>Immunogen</b>    | Fusion protein of human WDR1         |
| <b>Reactivity</b>   | Human, Mouse, Rat                    |
| <b>Content</b>      | 0.66 mg/ml                           |
| <b>Host species</b> | Rabbit                               |
| <b>Ig class</b>     | Immunogen-specific rabbit IgG        |
| <b>Purification</b> | Antigen affinity purification        |

### Target information

|                  |                    |
|------------------|--------------------|
| <b>Symbol</b>    | WDR1               |
| <b>Full name</b> | WD repeat domain 1 |

**Synonyms** AIP1; NORI-1; HEL-S-52

**Swissprot** O75083

#### **Target Background**

This gene encodes a protein containing 9 WD repeats. WD repeats are approximately 30- to 40-amino acid domains containing several conserved residues, mostly including a trp-asn at the C-terminal end. WD domains are involved in protein-protein interactions. The encoded protein may help induce the disassembly of actin filaments. Two transcript variants encoding different isoforms have been found for this gene.

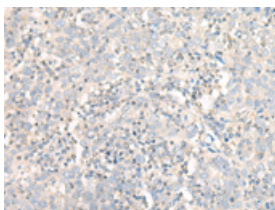
## Applications

### Immunohistochemistry

Predicted cell location: Cytoplasm

Positive control: Human cervical cancer

Recommended dilution: 30-150

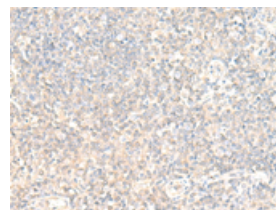


The image on the left is immunohistochemistry of paraffin-embedded Human cervical cancer tissue using ml225121(WDR1 Antibody) at dilution 1/20, on the right is treated with fusion protein. (Original magnification:  $\times 200$ )

Predicted cell location: Cytoplasm

Positive control: Human tonsil

Recommended dilution: 30-150



The image on the left is immunohistochemistry of paraffin-embedded Human tonsil tissue using ml225121(WDR1 Antibody) at dilution 1/20, on the right is treated with fusion protein. (Original magnification:  $\times 200$ )

### Western blotting

Predicted band size: 66 kDa

Positive control: A172 cell lysate

Recommended dilution: 200-1000

Gel: 8%SDS-PAGE

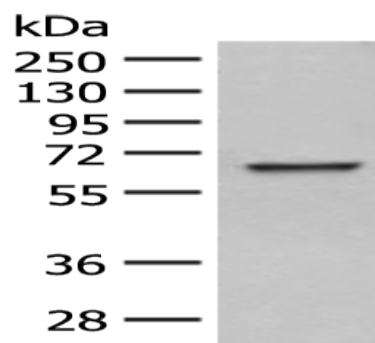
Lysate: 40  $\mu$ g

Lane: A172 cell lysate

Primary antibody: ml225121(WDR1 Antibody) at dilution 1/250

Secondary antibody: Goat anti rabbit IgG at 1/8000 dilution

Exposure time: 10 seconds



#### ELISA

Recommended dilution: 5000-10000

联系电话: 4008-898-798, 021-61725725

联系QQ: 2881505695, 2881505696

邮箱: [mlbio\\_cn@yeah.net](mailto:mlbio_cn@yeah.net)

网址: [www.mlbio.cn](http://www.mlbio.cn)