

Anti-TUBGCP4 antibody

Cat. No.	ml225133
Package	25 µl/100 µl/200 µl
Storage	-20°C, pH7.4 PBS, 0.05% NaN ₃ , 40% Glycerol

Product overview

Description	Anti-TUBGCP4 rabbit polyclonal antibody
Applications	ELISA, WB
Immunogen	Fusion protein of human TUBGCP4
Reactivity	Human, Mouse
Content	0.6 mg/ml
Host species	Rabbit
Ig class	Immunogen-specific rabbit IgG
Purification	Antigen affinity purification

Target information

Symbol	TUBGCP4
Full name	tubulin gamma complex associated protein 4
Synonyms	76P; GCP4; GCP-4; Grip76; MCCRP3
Swissprot	Q9UGJ1

Target Background

This gene encodes a component of the gamma-tubulin ring complex, which is required for microtubule nucleation. In mammalian cells, the protein localizes to centrosomes in association with gamma-tubulin. Crystal structure analysis revealed a structure composed of five helical bundles arranged around conserved hydrophobic cores. An exposed surface area located in the C-terminal domain is essential and sufficient for direct binding to gamma-tubulin. Mutations in this gene that alter microtubule organization are associated with microcephaly and chorioretinopathy. Alternative splicing results in multiple transcript variants.

订购热线: 4008-898-798

Applications

Western blotting

Predicted band size: 76 kDa

Positive control: K562, Hela, 231 and HT-29 cell lysates

Recommended dilution: 500-2000

Gel: 8%SDS-PAGE

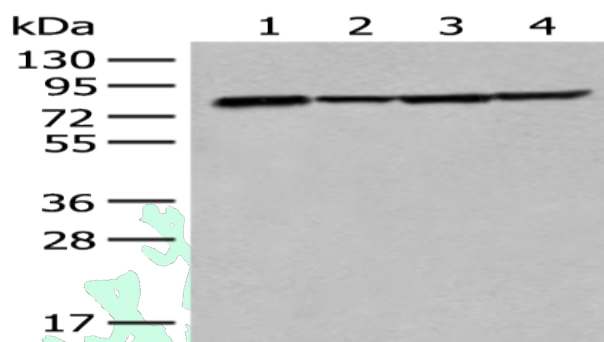
Lysate: 40 µg

Lane 1-4: K562, Hela, 231 and HT-29 cell lysates

Primary antibody: ml225133(TUBGCP4 Antibody) at dilution 1/300

Secondary antibody: Goat anti rabbit IgG at 1/8000 dilution

Exposure time: 1 minute



ELISA

Recommended dilution: 5000-10000

联系电话: 4008-898-798, 021-61725725

联系QQ: 2881505695, 2881505696

邮箱: mlbio_cn@yeah.net

网址: www.mlbio.cn