

Anti-SPIRE1 antibody

Cat. No.	ml225232
Package	25 µl/100 µl/200 µl
Storage	-20°C, pH7.4 PBS, 0.05% NaN ₃ , 40% Glycerol

Product overview

Description	Anti-SPIRE1 rabbit polyclonal antibody
Applications	ELISA, WB, IHC
Immunogen	Fusion protein of human SPIRE1
Reactivity	Human, Mouse
Content	0.9 mg/ml
Host species	Rabbit
Ig class	Immunogen-specific rabbit IgG
Purification	Antigen affinity purification

Target information

Symbol	SPIRE1
Full name	spire type actin nucleation factor 1

Synonyms	Spir-1
Swissprot	Q08AE8

Target Background

Spire proteins, such as SPIRE1, are highly conserved between species. They belong to the family of Wiskott-Aldrich homology region-2 (WH2) proteins, which are involved in actin organization (Kerkhoff et al., 2001 [PubMed 11747823]).

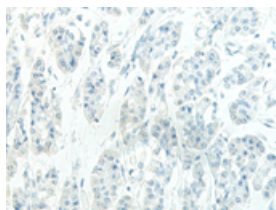
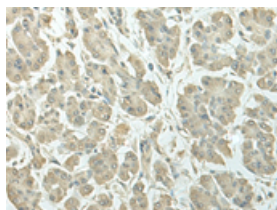
Applications

Immunohistochemistry

Predicted cell location: Nucleus or Cytoplasm

Positive control: Human gastric cancer

Recommended dilution: 50-300

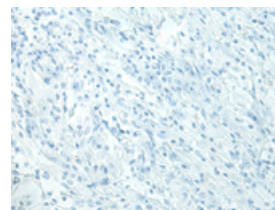
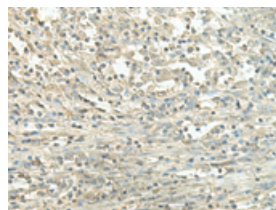


The image on the left is immunohistochemistry of paraffin-embedded Human gastric cancer tissue using ml225232(SPIRE1 Antibody) at dilution 1/50, on the right is treated with fusion protein. (Original magnification: ×200)

Predicted cell location: Nucleus or Cytoplasm

Positive control: Human liver cancer

Recommended dilution: 50-300



The image on the left is immunohistochemistry of paraffin-embedded Human liver cancer tissue using ml225232(SPIRE1 Antibody) at dilution 1/50, on the right is treated with fusion protein. (Original magnification: ×200)

Western blotting

Predicted band size: 86 kDa

Positive control: PC-3 cell lysate

Recommended dilution: 200-1000

Gel: 8%SDS-PAGE

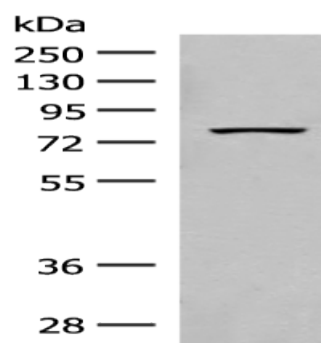
Lysate: 40 μ g

Lane: PC-3 cell lysate

Primary antibody: ml225232(SPIRE1 Antibody) at dilution 1/300

Secondary antibody: Goat anti rabbit IgG at 1/8000 dilution

Exposure time: 1 minute



ELISA

Recommended dilution: 5000-10000

联系电话: 4008-898-798, 021-61725725

联系QQ: 2881505695, 2881505696

邮箱: mlbio_cn@yeah.net

网址: www.mlbio.cn