

Anti-OVOL2 antibody

Cat. No.	ml225387
Package	25 µl/100 µl/200 µl
Storage	-20°C, pH7.4 PBS, 0.05% NaN ₃ , 40% Glycerol

Product overview

Description	Anti-OVOL2 rabbit polyclonal antibody
Applications	ELISA, WB, IHC
Immunogen	Fusion protein of human OVOL2
Reactivity	Human, Mouse
Content	0.84 mg/ml
Host species	Rabbit
Ig class	Immunogen-specific rabbit IgG
Purification	Antigen affinity purification

Target information

Symbol	OVOL2
Full name	ovo like zinc finger 2

Synonyms CHED; CHED1; CHED2; PPCD1; ZNF339; EUROIMAGE566589

Swissprot Q9BRP0

Target Background

This gene encodes a member of the evolutionarily conserved ovo-like protein family. Mammalian members of this family contain a single zinc finger domain composed of a tetrad of C2H2 zinc fingers with variable N- and C-terminal extensions that contain intrinsically disordered domains. Members of this family are involved in epithelial development and differentiation. Knockout of this gene in mouse results in early embryonic lethality with phenotypes that include neurectoderm expansion, impaired vascularization, and heart anomalies. In humans, allelic variants of this gene have been associated with posterior polymorphous corneal dystrophy.

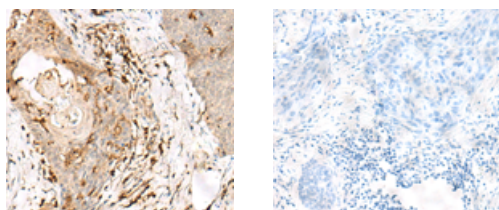
Applications

Immunohistochemistry

Predicted cell location: Nucleus

Positive control: Human esophagus cancer

Recommended dilution: 30-150



The image on the left is immunohistochemistry of paraffin-embedded Human esophagus cancer tissue using ml225387(OVOL2 Antibody) at dilution 1/50, on the right is treated with fusion protein. (Original magnification: $\times 200$)

Western blotting

Predicted band size: 30 kDa

Positive control: Human cerebella tissue, Human cerebrum tissue, Human skin tissue, NIH/3T3 cell, SKOV3 cell lysates

Recommended dilution: 500-2000

Gel: 8%SDS-PAGE

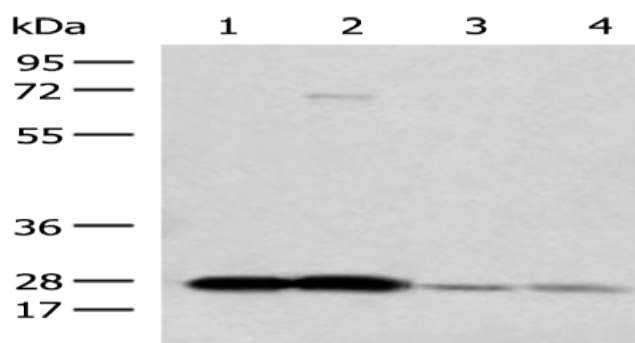
Lysate: 40 μ g

Lane 1-5: Human cerebella tissue, Human cerebrum tissue, Human skin tissue, NIH/3T3 cell, SKOV3 cell lysates

Primary antibody: ml225387(OVOL2 Antibody) at dilution 1/350

Secondary antibody: Goat anti rabbit IgG at 1/8000 dilution

Exposure time: 5 seconds



ELISA

Recommended dilution: 5000-10000

联系电话: 4008-898-798, 021-61725725

联系QQ: 2881505695, 2881505696

邮箱: mlbio_cn@yeah.net

网址: www.mlbio.cn