

## Anti-HCCS antibody

<b>Cat. No.</b>	ml225696
<b>Package</b>	25 µl/100 µl/200 µl
<b>Storage</b>	-20°C, pH7.4 PBS, 0.05% NaN <sub>3</sub> , 40% Glycerol

### Product overview

<b>Description</b>	Anti-HCCS rabbit polyclonal antibody
<b>Applications</b>	ELISA, WB, IHC
<b>Immunogen</b>	Fusion protein of human HCCS
<b>Reactivity</b>	Human, Mouse
<b>Content</b>	1.98 mg/ml
<b>Host species</b>	Rabbit
<b>Ig class</b>	Immunogen-specific rabbit IgG
<b>Purification</b>	Antigen affinity purification

### Target information

<b>Symbol</b>	HCCS
<b>Full name</b>	holocytochrome c synthase

**Synonyms**                      MLS; CCHL; MCOPS7; LSDMCA1

**Swissprot**                      P53701

#### **Target Background**

The protein encoded by this gene is an enzyme that covalently links a heme group to the apoprotein of cytochrome c. Defects in this gene are a cause of microphthalmia syndromic type 7 (MCOPS7). Three transcript variants encoding the same protein have been found for this gene.

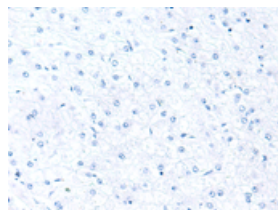
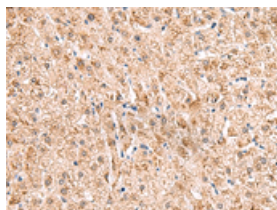
## Applications

### Immunohistochemistry

Predicted cell location: Cytoplasm

Positive control: Human liver cancer

Recommended dilution: 50-300

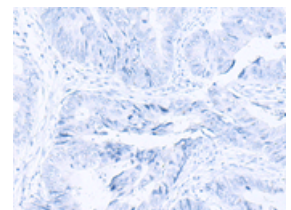
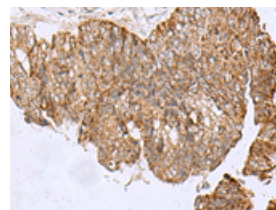


The image on the left is immunohistochemistry of paraffin-embedded Human liver cancer tissue using ml225696(HCCS Antibody) at dilution 1/110, on the right is treated with fusion protein. (Original magnification:  $\times 200$ )

Predicted cell location: Cytoplasm

Positive control: Human colorectal cancer

Recommended dilution: 50-300



The image on the left is immunohistochemistry of paraffin-embedded Human colorectal cancer tissue using ml225696(HCCS Antibody) at dilution 1/110, on the right is treated with fusion protein. (Original magnification:  $\times 200$ )

### Western blotting

Predicted band size: 31 kDa

Positive control: HepG2 cell lysate

Recommended dilution: 5000-10000

Gel: 8%SDS-PAGE

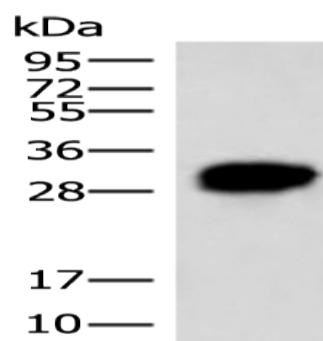
Lysate: 40 µg

Lane: HepG2 cell lysate

Primary antibody: ml225696(HCCS Antibody) at dilution 1/4000

Secondary antibody: Goat anti rabbit IgG at 1/5000 dilution

Exposure time: 1 second



#### ELISA

Recommended dilution: 5000-10000

联系电话: 4008-898-798, 021-61725725

联系QQ: 2881505695, 2881505696

邮箱: [mlbio\\_cn@yeah.net](mailto:mlbio_cn@yeah.net)

网址: [www.mlbio.cn](http://www.mlbio.cn)