

## Anti-ATP5PD antibody

<b>Cat. No.</b>	ml225725
<b>Package</b>	25 µl/100 µl/200 µl
<b>Storage</b>	-20°C, pH7.4 PBS, 0.05% NaN <sub>3</sub> , 40% Glycerol

### Product overview

<b>Description</b>	Anti-ATP5PD rabbit polyclonal antibody
<b>Applications</b>	ELISA, WB, IHC
<b>Immunogen</b>	Fusion protein of human ATP5PD
<b>Reactivity</b>	Human, Mouse
<b>Content</b>	0.78 mg/ml
<b>Host species</b>	Rabbit
<b>Ig class</b>	Immunogen-specific rabbit IgG
<b>Purification</b>	Antigen affinity purification

### Target information

<b>Symbol</b>	ATP5PD
<b>Full name</b>	ATP synthase peripheral stalk subunit d

**Synonyms** ATPQ; ATP5H

**Swissprot** O75947

### Target Background

Mitochondrial ATP synthase catalyzes ATP synthesis, utilizing an electrochemical gradient of protons across the inner membrane during oxidative phosphorylation. It is composed of two linked multi-subunit complexes: the soluble catalytic core, F1, and the membrane-spanning component, Fo, which comprises the proton channel. The F1 complex consists of 5 different subunits (alpha, beta, gamma, delta, and epsilon) assembled in a ratio of 3 alpha, 3 beta, and a single representative of the other 3. The Fo seems to have nine subunits (a, b, c, d, e, f, g, F6 and 8). This gene encodes the d subunit of the Fo complex. Alternatively spliced transcript variants encoding different isoforms have been identified for this gene. In addition, three pseudogenes are located on chromosomes 9, 12 and 15.

## Applications

### Immunohistochemistry

Predicted cell location: Cytoplasm and Cell membrane

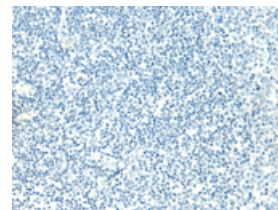
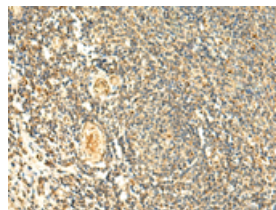
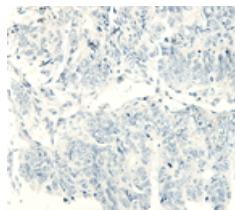
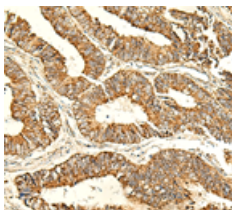
Positive control: Human colorectal cancer

Recommended dilution: 50-300

Predicted cell location: Cytoplasm and Cell membrane

Positive control: Human tonsil

Recommended dilution: 50-300



The image on the left is immunohistochemistry of paraffin-embedded Human colorectal cancer tissue using ml225725(ATP5PD Antibody) at dilution 1/50, on the right is treated with fusion protein. (Original magnification:  $\times 200$ )

The image on the left is immunohistochemistry of paraffin-embedded Human tonsil tissue using ml225725(ATP5PD Antibody) at dilution 1/50, on the right is treated with fusion protein. (Original magnification:  $\times 200$ )

### Western blotting

Predicted band size: 18 kDa

Positive control: Mouse skeletal muscle tissue, Mouse kidney tissue, PC-3, Jurkat, HepG2 and Hela cell lysates

Recommended dilution: 500-2000

Gel: 12%SDS-PAGE

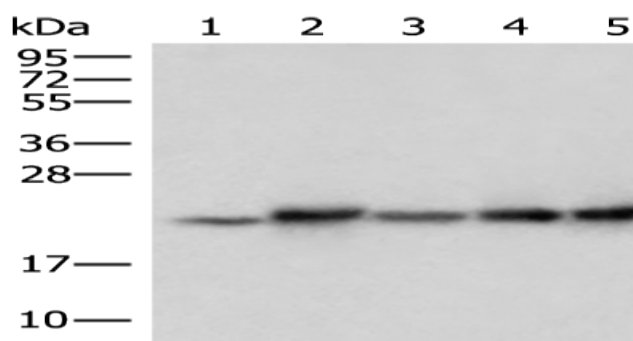
Lysate: 40 µg

Lane 1-6: Mouse skeletal muscle tissue, Mouse kidney tissue, PC-3, Jurkat, HepG2 and Hela cell lysates

Primary antibody: ml225725(ATP5PD Antibody) at dilution 1/300

Secondary antibody: Goat anti rabbit IgG at 1/8000 dilution

Exposure time: 3 seconds



## ELISA

Recommended dilution: 5000-10000

联系电话: 4008-898-798, 021-61725725

联系QQ: 2881505695, 2881505696

邮箱: [mlbio\\_cn@yeah.net](mailto:mlbio_cn@yeah.net)

网址: [www.mlbio.cn](http://www.mlbio.cn)